

au by KDDI

# beskey

by HITACHI

Basic Manual

READ THIS MANUAL TO MASTER THE CELLULAR PHONE

[www.au.kddi.com](http://www.au.kddi.com)

Illustrations and  
Screenshots  
in This Manual

Notes on  
Cell Phone Use

Contents

Getting Ready

Making and  
Answering Calls

Global Function

Character Input

Address Book

Mail

Camera

EZweb

EZ News EX

EZ Navi

TV (1Seg)

Teens Mode

In Case of Loss  
of Your beskey

Troubleshooting

Index

# Introduction

Thank you for purchasing the beskey. Before using your beskey, be sure to read the beskey Basic Manual (this PDF manual) to ensure correct usage. After you have finished reading this manual, store this PDF manual and the printed manuals in safe places so you can retrieve them whenever you need them.

## Manuals for the beskey

There are three manuals for the beskey: the Basic Manual, printed Instruction Manual (Japanese) and full Instruction Manual (Japanese).

### ● For learning the basics:

Read the beskey Basic Manual (this manual) or printed beskey Instruction Manual (Japanese).

### ● For learning details of each function:

The full Instruction Manual (Japanese) gives detailed instructions on using each function and can be downloaded from the au homepage: <http://www.au.kddi.com/torisetsu/index.html>

To ensure proper usage of the beskey, be sure to read the Safety Precautions "安全上のご注意" in the Instruction Manual.

- To access from EZweb (free of packet communication charge):

 ⇒ *Top Menu/Search* ⇒ *auお客様サポート* (au Customer Support) ⇒ *オンラインマニュアル* (Online Manual)

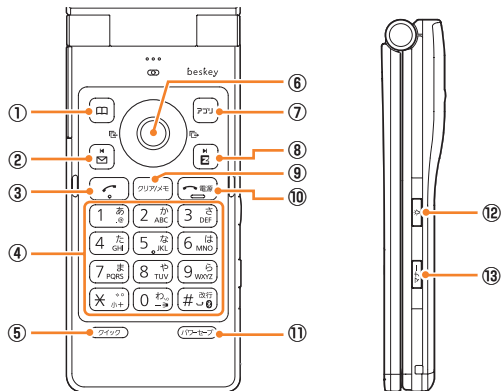
Scan this QR code to access the au Online Manual. ▶



# Illustrations and Screenshots in This Manual

## Note on Illustrations

The illustrations in this manual may look different from the actual cell phone in shape, color and typeface. The key illustrations are also simplified as shown below.



	Key Illustration		Key Illustration
①		⑥	
②		⑦	
③		⑧	
④		⑨	
		⑩	
		⑪	
		⑫	
⑤		⑬	

## Note on Screenshots

The screenshots in this manual are simplified and may look different from the actual cell phone screens.

- The display design themes of the beskey vary by model color. The screenshots for the Starry Navy models are used in this manual.

## Notes on Cell Phone Use

### Cell Phone Etiquette

The cell phone always emits weak radio waves when power is on.

Use the cell phone in an enjoyable and safe manner without forgetting to be considerate of others around you.

- Use of cell phones is not allowed in some places.
  - Do not use the cell phone while you are driving. Doing so is both dangerous and prohibited by law.
  - Using a cell phone in an aircraft is prohibited by law. Set Airplane Mode to *ON* and turn the cell phone power off.
- Radio waves from cell phones may interfere with medical electrical equipment.
  - Some people close to you in crowded places such as packed trains may be using a cardiac pacemaker. Turn the cell phone off in such places.
  - Abide by the rules of hospitals and other medical institutions where it is forbidden to use or carry cell phones.
- Be considerate of where you use the cell phone and how loudly you talk.
  - Do not make calls in theaters, museums, libraries, and other similar places. Turn power off or turn on manner mode not to disturb others around you by ring tones.
  - Do not use the cell phone on a street where you might interrupt the flow of pedestrians.
  - Move to areas where you will not inconvenience others on trains or in hotel lobbies.

- Refrain from talking in a loud voice.
- Obtain the permission of other people before you take their photos with the cell phone's camera.
- Do not record information with the cell phone's camera in bookstores and other locations where taking photos is not permitted.

### Do Not Use the Cell Phone While Driving!

Turn off your cell phone or put it in Drive Mode while driving.

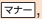


Do not use the cell phone while driving a car/motorcycle or riding a bicycle. It may result in a traffic accident. Using a cell phone while driving is prohibited by law. Using a cell phone while riding a bicycle may also be punishable by law.

#### Prohibited!

- Looking at a cell phone display
- Talking on a cell phone while holding it

#### Drive Mode

In Drive Mode, a Japanese message meaning "I'm driving now, so I can't answer your call." is played when a call is received, and asks the caller to leave a message on the answer memo.

When the standby screen is displayed, press , use  to select *Drive*, and then press  (Set).

## Disaster Message Board Service

When a large scale disaster occurs, you can register your safety information from EZweb. The registered information can be referred from anywhere in Japan from EZweb or Internet.

### Registering safety information

- When a large scale disaster occurs, from an au phone, you can register your safety information (i.e. your condition and comments) to the 災害用伝言板 (Disaster Message Board) created on the EZweb.
- After registration of your safety information, e-mail is sent to your family or acquaintances you have previously designated to notify that your safety information has been uploaded to the 災害用伝言板 (Disaster Message Board).

### Inquiring for safety information

- You can inquire for safety information of a person by entering his/her phone number from EZweb or Internet.\*  
\* To inquire from other carriers' cell phone, a PHS or PC, access "<http://dengon.ezweb.ne.jp/>".

Access	☎ ⇒ Top Menu/Search ⇒ 災害用伝言板 (Disaster Message Board)
	<a href="http://dengon.ezweb.ne.jp/">http://dengon.ezweb.ne.jp/</a>

- Registered information is stored until the service set up for the disaster ends.
- The maximum available number of registrations is 10 per phone number. When the number of registrations exceeds 10, the oldest one is overwritten.
- The demonstration of this service can be referred to anytime by pressing ☎ ⇒ Top Menu/Search ⇒ auお客さまサポート (au Customer Support) ⇒ 調べる (Search) ⇒ 災害用伝言板 (デモ版) (Disaster Message Board (Demo Version)).
- To view the Disaster Message Board in English, select *English* from the top menu of the Disaster Message Board.

## Water Resistance

The beskey complies with IPX5\*<sup>1</sup> and IPX7\*<sup>2</sup> water protection standards (JIS C 0920).

\*<sup>1</sup> IPX5 compliant means that this cell phone continues to function as a phone after being subjected to a water jet (approximately 12.5 liters/min.) discharged from a nozzle (inner diameter:6.3 mm), from all directions (approximately three meters from the cell phone) for three minutes or more.

\*<sup>2</sup> IPX7 compliant means that this cell phone continues to function as a phone and no water seeps inside after being gently lowered into a tank filled with still tap water (at normal temperature) to the depth of one meter, and immersed at the bottom for approximately 30 minutes.

- The beskey is resistant to fresh or tap water at normal temperature (5°C - 35°C) only.
- The beskey is resistant to water when the external connection jack cover and battery pack cover are closed firmly.
- Malfunction resulting from misuse is not covered by the warranty.

# Contents

## Introduction

## Illustrations and Screenshots in This Manual 1

## Notes on Cell Phone Use 2

Cell Phone Etiquette .....	2
Do Not Use the Cell Phone While Driving!.....	2
Disaster Message Board Service .....	3
Water Resistance .....	4

## Contents 5

## Getting Ready 7

Checking the Contents of the Box .....	7
Names of Parts .....	8
Changing Your Select keypad .....	9
Replacing the Select keypad .....	10
Replacing the Battery Pack .....	12
Charging the Battery Pack .....	13
Learning the Basics .....	15
Turning On Power .....	16
Switching the Display Language to English .....	16
Initial Setup of E-mail and EZweb .....	16
Checking Your Phone Number and E-mail Address ...	16
Display Indicators .....	17
Using Main Menu .....	18
Changing Your E-mail Address .....	20
Security Code and Passwords .....	21

## Making and Answering Calls 22

Making a Call .....	22
Making an International Call.....	22
Answering a Call .....	23
Returning a Call (Outgoing History/Incoming History)...	23
One-ring Calls.....	23
Adjusting the Earpiece Volume during a Call .....	24
Turning On Manner Mode .....	24
Changing the Incoming Ring Tone .....	24
Adjusting the Incoming Ring Tone Volume .....	25
Turning On the Answer Memo .....	25

## Global Function 27

Setting the Area .....	27
Obtaining the Latest PRL (Preferred Roaming List) ...	27
Calling Japan from Overseas .....	28

## Character Input 29

Character Entry Modes .....	29
Entering Alphanumeric Characters .....	29
Entering E-mail Addresses .....	30
Entering Pictograms/Decoration-Emojis/ Symbols/Face Marks .....	31

## Address Book 32

Saving an Address Book Entry .....	32
Dialing from the Address Book .....	32
Editing Address Book Entries .....	32
Saving a Phone Number from the Incoming or Outgoing History .....	33

<b>Mail</b>	<b>34</b>	<b>EZ Navi</b>	<b>46</b>
Using E-mail .....	34	Passenger Seat Navi for People	
Creating and Sending E-mail Messages .....	34	in the Passenger Seat to Check the Route .....	46
Reading Received E-mail Messages .....	35	Security Navi to Check Where Your Kids Are .....	46
Reading an E-mail Message		EZ Navi Walk for When You Go Out .....	47
with an Attached Photo or Movie.....	35	Evacuate Navi to Guide You Home or to Nearby	
Replying to Received E-mail Messages.....	35	Evacuation Areas during Disasters .....	48
Rejecting Spam .....	36		
Using C-mail .....	37	<b>TV (1Seg)</b>	<b>49</b>
Creating and Sending C-mail Messages .....	37	Initial Setup of au Media Tuner.....	49
Reading Received C-mail Messages .....	37	Watching TV (1Seg) .....	50
		Basic Operations .....	50
		Exiting the au Media Tuner .....	50
<b>Camera</b>	<b>38</b>		
Photo Taking Tips .....	38	<b>Teens Mode</b>	<b>51</b>
About Photo Modes .....	38	Setting Teens Mode .....	51
Taking a Photo .....	39		
Viewing Photos .....	39	<b>In Case of Loss of Your beskey</b>	<b>52</b>
		Setting Conditions for Activating the Remote	
<b>EZweb</b>	<b>40</b>	Ctrl Lock .....	52
Accessing Sites .....	41	Remotely Activating the Remote Ctrl Lock	
Bookmarking Frequently Accessed Pages .....	42	on Your beskey .....	52
Viewing Bookmarked Pages.....	42	Activating the Remote Ctrl Lock	
Checking Charges .....	43	by the Security Lock Service .....	53
Downloading Chaku-Uta-Full-Plus™/			
Chaku-Uta-Full®/Chaku-Uta® .....	43	<b>Troubleshooting</b>	<b>54</b>
<b>EZ News EX</b>	<b>44</b>	<b>Index</b>	<b>56</b>
Basic Operations .....	44		
Setting EZ News EX .....	44		

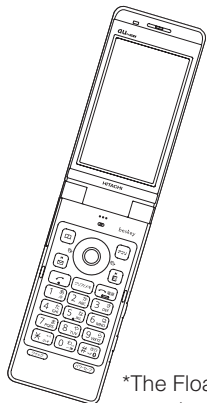


# Getting Ready

## Checking the Contents of the Box

The box contains the cell phone and accessories.

- Cell phone



- Select keypad

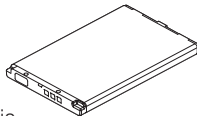
- Wave key



- Waterdrop key



- Battery pack



\*The Float key is attached at the time of purchase.

- Instruction Manual (Japanese)
- Warranty (Japanese)
- Safety Precautions (Japanese)
- Global Passport CDMA Owner's Guide (Japanese)
- Osaifu-Keitai® Guide (Japanese)
- JIBUN BANK Launcher Operation Guide (Japanese)

- The following accessories are not included.

- microSD memory card

- Desktop holder

- AC adapter

- USB cable

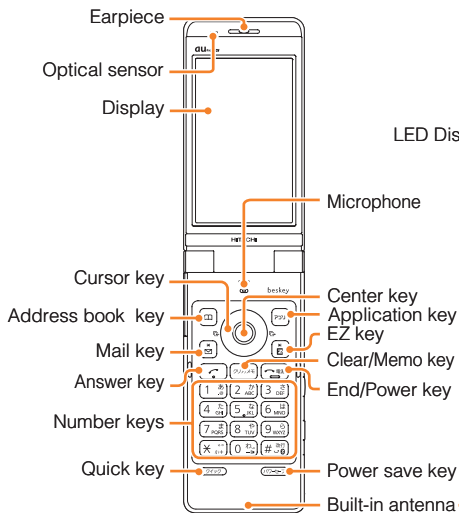
- Earphone jack conversion adapter

- Stereo earphone

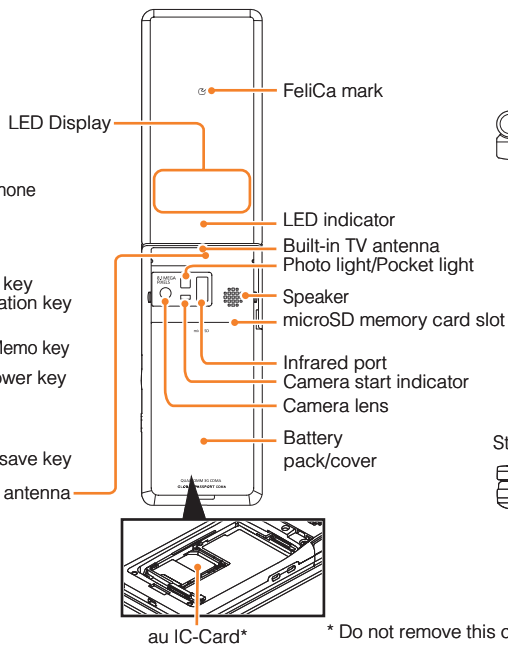
Purchase a specified AC adapter (sold separately) and a commercially available microSD memory card.

# Names of Parts

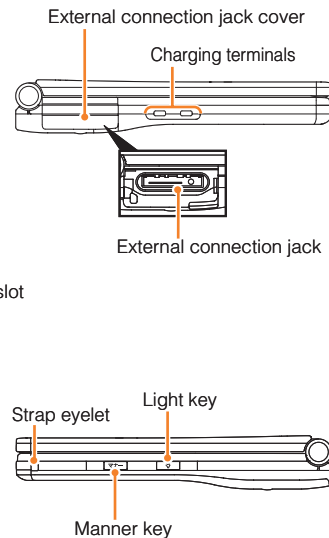
## From the Front



## From the Back



## From the Sides



\* Do not remove this card unnecessarily as your phone number is recorded on it.

## Changing Your Select keypad

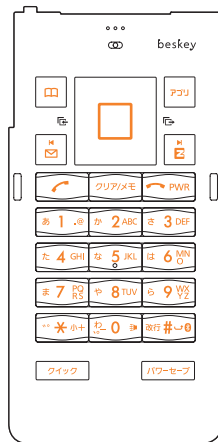
You can change the Select keypad as you like.

With the M332 Key Light set to *ON*, when you use the cell phone in the dark environment, the optical sensor detects the light level there and turns the key light on. (the ■ portions shown below only illuminated.)

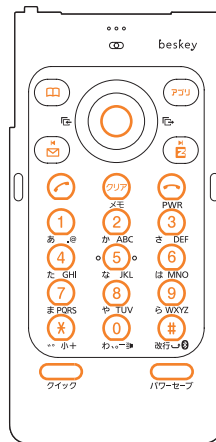
### Float key



### Wave key




### Waterdrop key

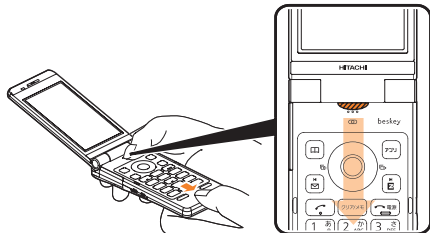


- The M332 Key Light is set to *ON* at the time of purchase.

## Replacing the Select keypad

### Removing the Select keypad

- ➔ Slide the select keypad in the direction of the arrow while pushing the  portion on the illustration below.

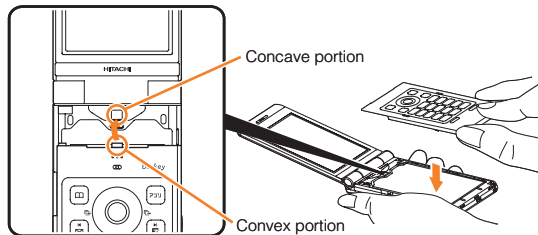



- ➔ Remove the select keypad lifting it vertically.

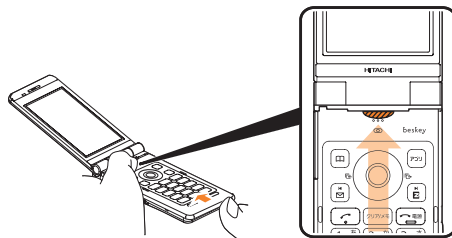


### Attaching the Select keypad

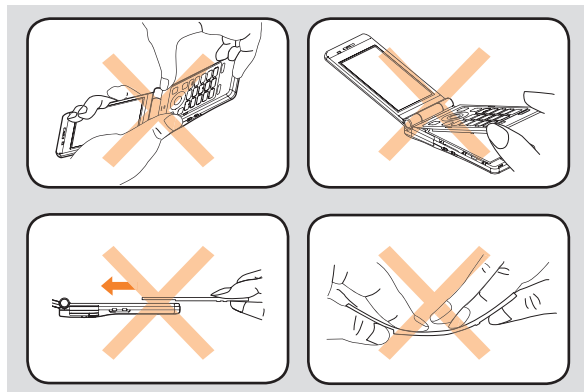
- ➔ Place the select keypad horizontally adjoining the convex portion of the select keypad to the concave portion of the cell phone.



- ➔ Holding the  portion on the illustration below with the finger, slide the select keypad from the bottom edge in the direction of the arrow and fit it completely.



- Use the select keypad properly. Improper use may damage the select keypad and/or cause injury.
- Be sure to use beskey with the select keypad attached.
- Do not touch the microphone portion or the vinyl sheet contact with the select keypad when the select keypad is not attached yet.
- Keep the select keypads away from the dust. If a stain or a dust applied to the select keypad, wipe it with the soft dry cloth.
- Attach the select keypad properly. Improper attachment may cause the malfunctions, such as poor key operation or low microphone level, etc. Further, it may damage the select keypad itself.
- When removing the select keypad, do not detach it from the bottom side first.
- When attaching the select keypad, do not insert the projection on the top of the select keypad in advance.
- When attaching the select keypad, slide the select keypad after confirming the claws on the select keypad catch perfectly the concave portions of the cell phone.
- Do not bend the select keypad forcibly.

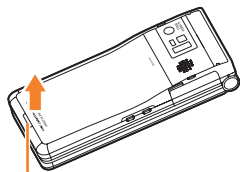


## Replacing the Battery Pack

Use only the battery pack for beskey, and be sure to install it correctly.

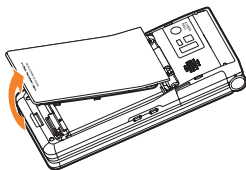
### Removing the Battery Pack

- ➔ Pull the battery pack cover upward in the direction of the arrow releasing from the concave portion.

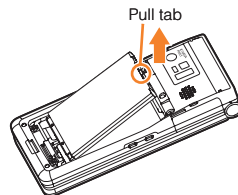


Concave portion

- ➔ Lift the battery pack cover to remove.



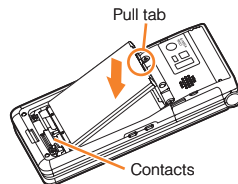
- ➔ Lift the battery pack with the Pull tab located on the top of the battery pack and remove it.



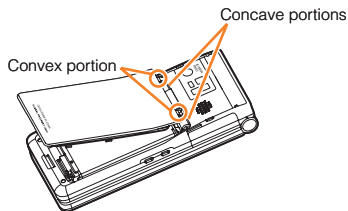
- Before removing the battery pack, turn the cell phone power off.
- When removing the battery pack, use the projection and pull it upward. Doing otherwise may result in damage to the contacts.

### Attaching the Battery Pack

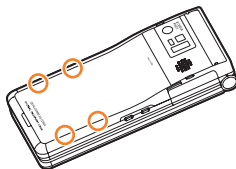
- ➔ With the Pull tab of the battery pack facing up, align the contacts on the battery pack with those of the cell phone, and insert the battery pack securely.



- ➔ Insert two claws on the battery pack cover into the concave portions on the cell phone and close the battery pack cover.



- ➔ Push 4 locations on the battery pack cover marked with circles in the figure securely and confirm whether there is no loosen portions around the battery pack cover.

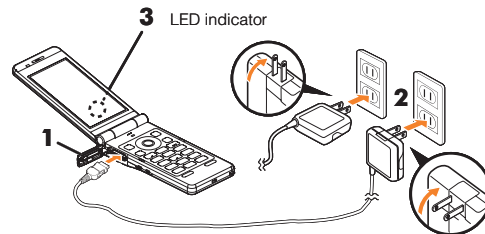


- Before attaching the battery pack, make sure that the au IC-Card is inserted securely.
- Failure to follow the correct procedures when attaching the battery pack may result in damage to the battery pack or battery pack cover.

## Charging the Battery Pack

The battery pack is not fully charged at the time of purchase. Be sure to charge the battery pack before using the cell phone for the first time.

- An AC adapter is not included. Purchase a specified AC adapter (sold separately).



- ➔ Connect a specified AC adapter to the cell phone with the battery pack attached.

- Open the external connection jack cover. Check the shape of the connector of the AC adapter, and plug it straight into the external connection jack.

- ➔ Unfold the power plug of the AC adapter and plug it into a 100 V AC power outlet.

- ➔ Confirm that the LED indicator lights.

- Charging: A charge beginning sounds and the LED indicator lights.
- Charging finished: A charge completion sounds and the LED indicator goes out.

- Be sure to close the external connection jack cover when charging is finished.
- Do not pull or twist the external connection jack cover forcibly.
- Be sure to use the common AC adapter 02 (sold separately) when charging overseas.



## Learning the Basics

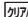
### Key Assignments

 : Display Incoming History.

 : Display Notification window/  
Shortcut menu.

 : Use Address Book.

 : Display E-mail/C-mail menu.

 : Set/cancel Answer memo.  
Delete characters.  
Cancel operation.

 : Make/answer calls.

 : Display QuickAccess menu.




 : Display the ticker field and info pane.





 : Display Outgoing History.


 : Display Main menu.

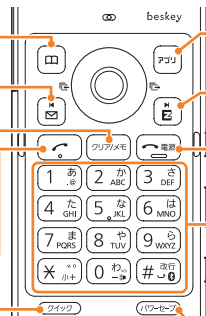
 : Display EZapps menu.

 : Display EZ Service menu.

 : Turn power on/off.  
End call/communication.  
Cancel operation.

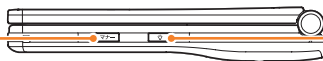
 ~    :  
Input phone numbers and characters.

 : Set/cancel Power save mode.  
(hold down for at least one second)





### Side Key Assignments



 : Set/cancel Manner Mode.




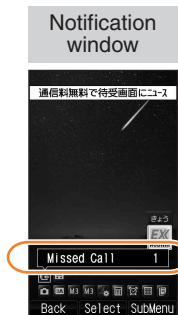
 : Activate Pocket light.

- If you lose track of where you are or if you make a mistake, press  to return to the previous screen. Return to the standby screen by holding down  for at least one second.

## Hiding/Redisplaying the Notification Window

When the Notification window is displayed on the standby screen, you can temporarily hide it by pressing  (Back) and then display the Main menu by pressing .

To redisplay the hidden Notification window, press  when the standby screen is displayed.



→ Use  to select **画面表示** (Screen Display) and then press  (選択 [Select]).

→ Use  to select **Set Language** and then press  (選択 [Select]).

→ Use  to select **English** and then press  (Set).

## Initial Setup of E-mail and EZweb

To use e-mail and EZweb, you need to apply for an EZweb subscription. If you did not apply for an EZweb subscription at the time of purchase, contact an au shop or the au Customer Service Center.

Also, before use, you need to configure initial settings. Your e-mail address is assigned automatically in the initial setup.



**When the standby screen is displayed, press .**

→ Press  (OK).

After a short while, your e-mail address is displayed.


→ Press  (OK).

The initial settings are complete.


- You can also configure initial settings by pressing  or .

## Turning On Power

Hold down  for at least a few seconds.

- You cannot receive or make calls if  (out of range indicator) is displayed.

## Turning Off Power

When the standby screen is displayed, hold down  for at least one second.

## Switching the Display Language to English

You can switch the display language for function names and other items to English.

When the standby screen is displayed, press .

→ Use  to select **機能** (Function) and then press  (選択 [Select]).

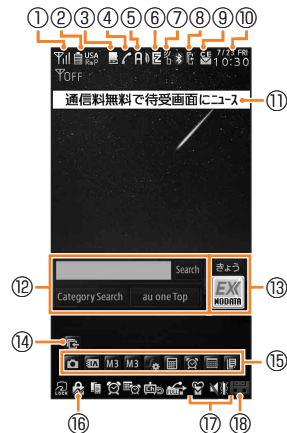
## Checking Your Phone Number and E-mail Address

When the standby screen is displayed, press  and then .

# Display Indicators

Display indicators inform you of mail arrival, current settings, etc.

## Display






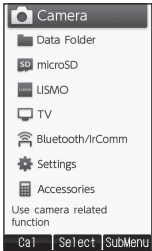
Indicator	Description
①	Signal strength
②	Battery level
③	A microSD memory card (commercially available) inserted
④	During a call au Media Tuner activated
⑤	EZapps activated
⑥	Connecting to EZweb
⑦	Receiving EZ News EX information
⑧	Missed calls
⑨	New or unread e-mail/C-mail
⑩	Current date and time
⑪	Ticker field
⑫	Search window
⑬	Info pane
⑭	Notification icon
⑮	Shortcut menu
⑯	Auto Lock activated/Side key disable feature on
⑰	Manner mode set
⑱	Answer memo or manner mode set

## Using Main Menu

You can access various functions from the Main menu. The Main menu patterns vary by model color. The screenshots for the Starry Navy models are used in this manual.

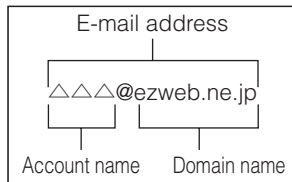
Model Color	Main Menu Pattern
Starry Navy	Standard
Prism Pink	Pop
Twinkle White	Shelf

Each Main menu pattern has a different set of items.

Standard	Pop	Shelf	Simple
			
microSD	Function	microSD	Camera
Data Folder	PC Site Viewer	Data Folder	Data Folder
PC Site Viewer	Infrared Comm	PC Site Viewer	microSD
Function	LISMO	Function	LISMO
TV	TV	TV	TV
Camera	Camera	Camera	Bluetooth/IrComm
LISMO	ImageAlbum	LISMO	Settings
Watch/Calendar	Data Folder	Watch/Calendar	Accessories
EZ FeliCa	microSD	EZ FeliCa	
ImageAlbum	Watch/Calendar	ImageAlbum	
Bluetooth/IrComm	Accessories	Bluetooth/IrComm	
Accessories	Calorie Counter Settings	Accessories	

## Changing Your E-mail Address

You can change the account name of your e-mail address.



When the standby screen is displayed, press .

➔ Use to select *E-mail Setup* and then press (Select).

➔ Use to select *Change adrs/Other* and then press (Select).

The cell phone connects to the server.

➔ Use to select *Eメールアドレスの変更* (Change E-mail Address) and then press (Select).

➔ Use to select the entry box, press (Input), enter your security code, and then press (OK).

- Your security code is the four-digit number you wrote on your subscription form.

- If the security code is incorrectly entered three times consecutively during a single day, the e-mail address change operation will be disabled until the next day.

➔ Use to select *送信* (Send) and then press (Select).

➔ Use to select *承諾する* (Accept) and then press (Select).

➔ Use to select the entry box, press (Input), enter an e-mail address using single-byte alphanumeric characters, and then press (OK).

- For details on entering e-mail addresses, see page 30.

➔ Use to select *送信* (Send) and then press (Select).

➔ Use to select *OK*, press (Select) and then (OK).

- Check that the e-mail address has been updated before pressing (OK).

- Your e-mail address cannot be changed if the new address you enter in the above procedure is already being used. In this case, enter a different e-mail address.

## Security Code and Passwords

You can use a security code and other passwords described below.

Take care not to forget your security code and passwords, because they are required for performing various operations and using subscription services.

### Security Code

Usage Example	<ul style="list-style-type: none"><li>①Using the Answering Service (Voice Mail) and Call Transfer remotely from a fixed-line phone</li><li>②Making inquiries, applications, and changes while using au Customer Service Center voice guidance, au web pages, and EZweb</li><li>③Changing the settings of <i>Spam Filter</i> or <i>Change adrs/Other</i> under E-mail Setup</li></ul>
Initial Setting	The four-digit number you wrote on your subscription form

### Lock No.

Usage Example	Changing various settings of the cell phone
Initial Setting	1234

### EZ Password

Usage Example	Subscribing or canceling subscriptions to EZweb fee-based contents
Initial Setting	The four-digit number you wrote on your subscription form

### Premium EZ Password

Usage Example	<ul style="list-style-type: none"><li>①Subscribing or canceling subscriptions to EZweb fee-based contents paid by <i>まとめてau 支払い</i> (au Collective Payment Service)</li><li>②Purchasing products from EZweb sites using <i>まとめてau 支払い</i> (au Collective Payment Service)</li></ul>
Initial Setting	The four-digit number you wrote on your subscription form

## Making and Answering Calls





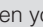
### Making a Call

When the standby screen is displayed, use  to  to enter a phone number.

- When calling to a fixed-line phone, you also need to enter the area code.

➔ Press .

- To end the call, press .

- After you enter a phone number, you can add 184 or 186 to the phone number as follows:
  - ➔ Press  (Call).
  - ➔ Use  to select *Add Special No.* and then press  (OK).
  - ➔ Use  to select *184* or *186* and then press  (Add).

*184:* When you do not want to inform the other party of your phone number.


*186:* When you want to inform the other party of your phone number.

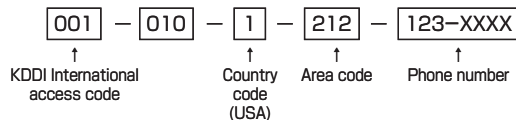
## Making an International Call

### 001 International Call Service

Available without any additional application

Example: To call 212-123-△△△△ in the USA

Enter the access code, a country code, area code and phone number, and then press .



- International call charges are billed together with monthly local call charges.
- For more information on 001 International Call Service, dial either of the following numbers:
  - From au cell phones (toll-free):  
**157** (area code not required)
  - From fixed-line phones (toll-free):  
**0077-7-111**  
(Open 9:00 to 20:00 everyday)



## Answering a Call

To answer a call, press .

- To end the call, press .

### Display When a Call is Received


The phone number of the caller appears.


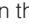
If the caller's phone number and name are in the address book, the name is also displayed.

When the phone number of the caller is not displayed, one of the following indicators may appear.

Indicator	Meaning
<i>ID Unsent</i>	The caller did not send a Caller ID.
<i>Payphone</i>	The call is from a pay phone.
<i>Not Support</i>	The call is from a phone that does not support Caller ID.

### Missed Call Notification


If you did not answer a call,  and *Missed Call* are displayed to let you know that you missed a call.

To check the caller's phone number, use  to select *Missed Call* and then press  (Select). You can then return the call (see the procedure on the right).

## Returning a Call (Outgoing History/Incoming History)

Example: Returning a call to a phone number in the incoming history


When the standby screen is displayed, press .

- Press  while the standby screen is displayed to display the Outgoing History screen.

➔ Use  to select the phone number you want to call and then press  (Detail).

- Press  to display the Outgoing History screen.

➔ Press .


- The cell phone can store up to 50 phone numbers in each of the incoming and outgoing history.
- If  is pressed on the Incoming or Outgoing History screen, a list of Frequency of Call is displayed. You can call by selecting from this list.

## One-ring Calls

### What is a One-ring Call?



A one-ring call is a call from an unknown caller that only rings once, causing it to be stored in the incoming history. One-ring calls are often used to get you to return the call, which will connect you to a dating service or some other service that charges you at high rates.

## One-ring Indicator

 (red) indicator on the Incoming History screen indicates you have received a one-ring call (a call rang for three seconds or shorter). Be careful when you return a call to an unknown caller.

## Adjusting the Earpiece Volume during a Call



During a call, use .

- : Increases the volume.
- : Decreases the volume.

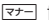
→ Press  (OK).



## Turning On Manner Mode

When the standby screen is displayed, hold down  for at least one second.

This turns on manner mode, and displays  on the standby screen. This also turns on Answer memo, which is indicated by  on the standby screen.

## Turning Off Manner Mode

When the standby screen is displayed, hold down  for at least one second.



Turning off manner mode causes  to disappear from the standby screen. Answer memo is also turned off, which is indicated by  disappearing from the standby screen.


- Even in manner mode, the cell phone still emits a sound when autofocusing, a shutter sound when you take a photo.



## Changing the Incoming Ring Tone

When the standby screen is displayed, press .

→ Use  to select *Function* and then press  (Select).

→ Use  to select *Sound/Vib/Lamp* and then press  (Select).

→ Use  to select *Incoming Setup* and then press  (Select).

→ Use  to select *Incoming Call* and then press  (Select).

→ Use  to select *Ringtone* and then press  (Select).

→ Use  to select *Original* and then press  (Select).

→ Use  to select a ring tone and then press  (Set).















The incoming ring tone is set.

- If you press  (Play), the tone plays.

→ Press  (OK).

## Adjusting the Incoming Ring Tone Volume

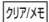
When the standby screen is displayed, press .

- ➔ Use  to select *Function* and then press  (Select).
- ➔ Use  to select *Sound/Vib/Lamp* and then press  (Select).
- ➔ Use  to select *Incoming Setup* and then press  (Select).
- ➔ Use  to select *Incoming Call* and then press  (Select).
- ➔ Use  to select  (Ringtone Volume) and then press  (Select).
- ➔ Use  to adjust the volume and then press  (Set).
  - Each press of  changes the volume one step.

<i>STEP</i> ↑	The ring tone volume gradually increases.
<i>STEP</i> ↓	The ring tone volume gradually decreases.
<i>Level5</i> ↑ ↓ <i>Level1</i>	The ring tone sounds at the set volume.
<i>OFF</i>	The ring tone does not sound.

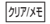

➔ Press  (OK).

## Turning On the Answer Memo

When the standby screen is displayed, hold down  for at least one second.

 is displayed on the standby screen.






### Turning Off the Answer Memo

When the standby screen is displayed, hold down  for at least one second. The answer memo is turned off and  disappears from the standby screen.

- The cell phone can record a maximum of ten messages, each up to 60 seconds long.
- Answer memo is a function that automatically answers calls and allows callers to record messages. Use the Answering Service (Voice Mail) when your phone is turned off or when you are in a location where a signal cannot be received.



### Playing a Message



If a message is recorded, *Answer Memo* appears on the standby screen.

- ➔ Use  to select *Answer Memo* and then press  (Select).
- ➔ Use  to select the message you want to play and then press  (Play).
  - To stop playing the message, press  (Stop).

## Deleting a Message

When the standby screen is displayed, press .


➔ Use  to select *Answer Memo* and then press  (Select).

➔ Use  to select *Answer Memo List* and then press  (Select).

➔ Use  to select the message you want to delete and then press  (SubMenu).

➔ Use  to select *Delete* and then press  (OK).

➔ Use  to select *Delete One* and then press  (OK).

➔ Use  to select *YES* and then press  (OK).

## Global Function

The beskey supports Global Passport CDMA services. You can use your beskey overseas without any additional application.

### Setting the Area

When the standby screen is displayed, press **⊙**.

- ➔ Use **⬆** to select *Accessories* and then press **⊙** (Select).
- ➔ Use **⬆** to select *GLOBAL Function* and then press **⊙** (Select).  
Precautions are displayed.
- ➔ Check the precautions and then press **⊙** (OK).
- ➔ Use **⬆** to select *Area Setting* and then press **⊙** (Select).
- ➔ Use **⬆** to select *Overseas* and then press **⊙** (Select).
- ➔ Use **⬆** to select *YES* and then press **⊙** (OK).

• Some functions are not available when *Area Setting* is not set to *Japan*.

### Obtaining the Latest PRL (Preferred Roaming List)



Manually update and set the PRL (preferred roaming list) before traveling abroad.

When the standby screen is displayed, press **⊙**.



- ➔ Use **⬆** to select *Accessories* and then press **⊙** (Select).
- ➔ Use **⬆** to select *GLOBAL Function* and then press **⊙** (Select).  
Precautions are displayed.
- ➔ Check the precautions and then press **⊙** (OK).
- ➔ Use **⬆** to select *PRL Setting* and then press **⊙** (Select).
- ➔ Use **⬆** to select *PRL Manual Update* and then press **⊙** (Select).
- ➔ Use **⬆** to select *OK* and then press **⊙** (OK).  
The cell phone connects to the server.
- ➔ Use **⬆** to select *PRLダウンロード (Download PRL)* and then press **⊙** (ダウンロード [Download]).  
The latest PRL is downloaded.

- The PRL (preferred roaming list) is the area information of overseas carriers offering international roaming service in partnership with KDDI (au).
- To obtain (download) the PRL, you need to subscribe to EZweb and make initial settings (see page 16) while in Japan.

## Calling Japan from Overseas

When the standby screen is displayed, use  to  to enter a phone number.

➔ Press  (Call).

➔ Use  to select *Voice Call* and then press  (OK).


➔ Use  to select *Call to Japan* and then press  (OK).

➔ Press  or  (Call).








- When you make an international call from Japan to a Global Passport CDMA-compatible cell phone, you can do it in the same way as making domestic calls within Japan.



# Character Input

## Character Entry Modes

When a character entry screen is displayed, you can select a character entry mode if you press  (Char.Type).



### Menu Items


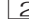


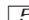






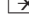
-  : Kanji conversion mode
-  : Double-byte katakana mode
-  : Single-byte katakana mode
-  : Double-byte alphanumeric mode
-  : Single-byte alphanumeric mode
-  : Double-byte number mode
-  : Single-byte number mode


Use  to select a character entry mode and then press  (OK).

- The character entry mode that you can select is different depending on the current character entry screen.


## Entering Alphanumeric Characters

You can use the keys  to  to enter characters. More than one character is assigned to each key. The following table shows the key assignment for entering characters.


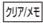

	Number of Times to Press the Key											
Key	1	2	3	4	5	6	7	8	9	10	11	12
	.	@	-	_	/	:	~	1				
	a	b	c	A	B	C	2					
	d	e	f	D	E	F	3					
	g	h	i	G	H	I	4					
	j	k	l	J	K	L	5					
	m	n	o	M	N	O	6					
	p	q	r	s	P	Q	R	S	7			
	t	u	v	T	U	V	8					
	w	x	y	z	W	X	Y	Z	9			
	0	Inputs symbols										
	Inputs symbols (switches an unconfirmed character between uppercase and lowercase).											
	Adds a line break and displays characters in the opposite order.											

When you change your e-mail address, you cannot use the characters in  for the account name (part of the address to the left of @).

## Entering Two or More Characters Assigned to the Same Key

After you enter the first character, press  and then enter the next character.

## Deleting Characters

To delete one character at a time, move the cursor to the character you want to delete and then press . To delete all characters to the right of the cursor, hold down  for at least one second. If there are no characters to the right of the cursor, holding down  will delete all the characters.

## Starting a New Line

Press .

- Certain functions such as C-mail do not support entering new lines.

## Entering E-mail Addresses



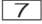

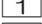
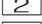



### E-mail Address Compatible Characters

- Before you enter an e-mail address, switch to the lowercase alphanumeric (single-byte) mode.
- When changing your e-mail address, you can enter up to 30 single-byte alphanumeric and symbol characters for the account name (part to the left of @). Note the following:
  - Uppercase characters cannot be used.
  - Period (.) or zero (0) cannot be used as the first character.

### How to Enter E-mail Addresses

Example: Entering "taro.23@kddi.co.jp"


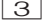

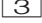

#### Enter "taro.23".

- t : Press  once.
- a : Press  once.
- r : Press  three times.
- o : Press  three times.
- . : Press  once.
- 2: Press  once and then .
- 3: Press  once and then .

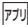





#### ➔ Enter "@".

- @: Press  twice.

#### ➔ Enter "kddi".

- k: Press  twice.
- d: Press  once and then .
- d: Press  once.
- i : Press  three times.








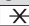

- ➔ Press  (SubMenu).
- ➔ Use  to select *Phrase* and then press  (OK).
- ➔ Use  (Category) to select *Internet*.
- ➔ Use  to select *.co.jp* and then press  (Select).  
".co.jp" is entered.

## Entering Pictograms/Decoration-Emojis/Symbols/Face Marks

Example: Entering pictograms

**When a character entry screen is displayed, press**












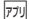






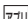


- ➔ Use  to select the pictogram you want to enter and then press  (Select).
    - You can enter pictograms consecutively if you press  (Repeat) instead of  (Select).
- Each time you press  in the character entry screen, the character entry mode changes in following order:  
Pictograms → Decoration-Emojis (e-mail only) → Symbols → Face Marks...
  - You can switch categories of pictograms, Decoration-Emojis or face marks by pressing  /  on each selection screen.

# Address Book

## Saving an Address Book Entry







When the standby screen is displayed, hold down  for at least one second.

- ➔ Use  to select  [Name] and then press  (Select).
- ➔ Enter a name and then press  (OK).  
The  [Reading] for the name is entered automatically.
- ➔ Use  to select  [Phone No.1] and then press  (Select).
- ➔ Enter a phone number and then press  (OK).
  - If the phone number is for a fixed-line phone, enter the phone number starting with the area code.
- ➔ Use  to select a phone number type and then press  (Select).
  - Follow the next step to enter an e-mail address. If you do not want to enter an e-mail address, press  (Reg).
- ➔ Use  to select  [E-mail Address1] and then press  (Select).
- ➔ Enter an e-mail address and then press  (OK).
- ➔ Use  to select an e-mail address type and then press  (Select).
- ➔ Press  (Reg).

- The address book can store up to 1,000 entries.
- The cell phone automatically saves an entry to the lowest available memory number from 000 to 999.
- You can save three phone numbers and three e-mail addresses for each address book entry.
- You can also assign a group No., and enter birthday, address, and other information.






## Dialing from the Address Book

When the standby screen is displayed, press .

- ➔ Use  to select the entry containing the phone number you want to dial and then press  (Detail).
- ➔ Use  to select the phone number and then press  (Select).
- ➔ Use  to select *Voice Call* and then press  (OK).



## Editing Address Book Entries

When the standby screen is displayed, press .

- ➔ Select an entry and press  (Detail).
- ➔ Press  (Edit).
- ➔ Edit the contents and then press  (Reg).
- ➔ Use  to select *Overwrite* and then press  (OK).

## Saving a Phone Number from the Incoming or Outgoing History

Example: Saving a phone number from the incoming history to the address book

When the standby screen is displayed, press  and use  to select the phone number you want to save.

➔ Press  (SubMenu).

➔ Use  to select *Reg to Adrs Book* and then press  (OK).

➔ Use  to select *Register New* and then press  (Select).

➔ Use  to select a phone number type and then press  (Select).

- For details on saving an address book entry, see page 32.

## Using E-mail

To use e-mail, you need to apply for an EZweb subscription. If you did not apply for an EZweb subscription at the time of purchase, contact an au shop or the au Customer Service Center. Also, before use, you need to configure initial settings.

You can send and receive e-mail with other cell phones that support e-mail, and with PCs. In addition to text messages of up to 5,000 double-byte (or 10,000 single-byte) characters, you can also send photos and movies by e-mail.



- The packet communication charge for sending and receiving e-mail applies to the amount of data sent and received.
- You can send an e-mail message to up to 30 different addresses at one time.
- You can send up to 1,000 e-mail messages per day (a message with multiple recipients is counted as more than one message).
- Sending and receiving e-mail messages that include attachment data may take a while.

## Creating and Sending E-mail Messages

When the standby screen is displayed, press .

➔ Use  to select *Create New* and then press  (Select).


➔ Use  to select *Address* and then press  (Select).

➔ Use  to select *Quote Adrs Book* and then press  (Select).

➔ Use  to select an address book entry and then press  (Select).

➔ Use  to select an address and then press  (Select).

This step is not necessary if the number of mail addresses registered in the selected address book entry is only one.

➔ Use  to select *Subject* and then press  (Select).

➔ Enter a subject and then press  (OK).

- You cannot enter single-byte katakana characters or a new line in a subject.

➔ Use  to select *Text* and then press  (Select).



➔ Enter text and then press  (OK).

- You cannot enter single-byte katakana characters.

➔ Press   (Send).



## Reading Received E-mail Messages



When you receive an e-mail message, *E-mail* appears on the standby screen.



➔ Use  to select *E-mail* and then press  (Select).



The message screen of received mail is displayed.

When you receive multiple e-mail messages, *E-mail* appears on the standby screen.




➔ Use  to select *E-mail* and then press  (Select).

➔ Use  to select the folder that has a new message you want to read and then press  (Select).

- : Indicates a read message.
- : Indicates an unread message.

➔ Use  to select the new message and then press  (Select).

### Reading an E-mail Message from the E-mail Menu



When the standby screen is displayed, press  to display the E-mail menu, use  to select *Inbox* and then press  (Select).



For subsequent operations, see "Reading Received E-mail Messages" above.

## Reading an E-mail Message with an Attached Photo or Movie


Example: Viewing an attached photo

Display the e-mail message that has an attached photo (above).

➔ Use  to select the file name and then press  (Select).

➔ Use  to select the file name and then press  (Receive).



➔ Press  (Play).

- Selecting the file name or pressing  (Receive) may be unnecessary for some files to be displayed, depending on the file size.

## Replying to Received E-mail Messages

When the standby screen is displayed, press .

➔ Use  to select *Inbox* and then press  (Select).

➔ Use  to select a folder and then press  (Select).

➔ Use  to select the message you want to reply to and then press  (Select).

➔ Press  (Reply).

"Re:" is prefixed to the subject, and the text of the message is quoted.

➔ Refer to "Creating and Sending E-mail Messages" (page 34) for subsequent operations.

## Rejecting Spam

Setting mail filters to reject spam is recommended.



The サポート設定 (Supportive Settings) helps you to set mail filters easily by answering questions that appear on the screen.


### Setting Mail Filters

Example: Connecting to サポート設定 (Supportive Settings)


When the standby screen is displayed, press .

➔ Use  to select *Spam Filter* and then press .

➔ Use  to select 次へ (Next) and then press .

➔ Use  to select the entry box and then press .

➔ Enter your security code and then press .

➔ Use  to select 送信 (Send) and then press .

➔ Use  to select サポート設定 (Supportive Settings) and then press .

### カンタン設定 (Simple Settings)

サポート設定 (Supportive Settings)	Set the filter by answering questions This is recommended for users who want to configure settings while confirming conditions.
フィルターレベル (高) Filter Level (High)	Shut out all mail from PCs This is recommended for users who only want to send mail to and receive mail from cell phones.
フィルターレベル (中) Filter Level (Medium)	Block spoof e-mail and mail from specific addresses This is recommended for users bothered by certain senders or spam mail.
フィルターレベル (低) Filter Level (Low)	Block spoof e-mail This is the minimum level recommended for all users.

- You can also prevent spam by changing your e-mail address. For details on changing your e-mail address, see page 20.

## Using C-mail

C-mail is a service that uses phone numbers as addresses to exchange messages between au cell phones that support C-mail. A C-mail message can contain up to 50 double-byte (or 100 single-byte) characters.

- The C-mail send charge applies when sending C-mail.









### C-mail Safety Block






C-mail safety block is a function that allows you to reject C-mails that include URLs (<http://△△△>, <https://△△△>) or phone numbers in the C-mail message text.

C-mail safety block is valid by default. Cancel the setting if you want to receive C-mails that include URLs and phone numbers in the message text.

## Creating and Sending C-mail Messages









When the standby screen is displayed, hold down  for at least one second.

- ➔ Use  to select *Create New* and then press  (Select).
- ➔ Enter text and then press  (OK).
- ➔ Use  to select  [Address] and then press  (Edit).
- ➔ Use  to select *Quote Adrs Book* and then press  (OK).




- ➔ Use  to select an address book entry and then press  (Detail).
- ➔ Use  to select a phone number and then press  (Select).
- ➔ Press  (Send).

## Reading Received C-mail Messages

When you receive a C-mail message, *C-mail* appears on the standby screen.

- ➔ Use  to select *C-mail* and then press  (Select).
- ➔ Use  to select the folder that has a new message you want to read and then press  (Select).
  - : Indicates a read message.
  - : Indicates an unread message.
- ➔ Use  to select the new message and then press  (View).

### Reading a C-mail Message from the C-mail Menu

When the standby screen is displayed, hold down  for at least one second to display the C-mail menu, use  to select *Inbox* and then press  (Select).

For subsequent operations, see "Reading Received C-mail Messages" above.

## Camera

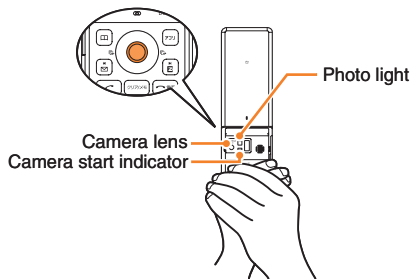
Your cell phone has a CMOS camera with 8.08 effective megapixels for shooting photos and movies. You can use the self-timer and autofocus.

Shot images can be used for the standby screen, and attached to e-mail messages.

### Photo Taking Tips

When taking photos, frame the subject within the display and hold the cell phone steady with both hands to avoid shaking.

#### Regular Open Position



## About Photo Modes

The following modes are available for taking photos. W.paper (F.Wide) is set for W.paper mode and 8M is set for DSC mode at the time of purchase.

Mode	Shot Size	Storage Location
W.paper Mode	W.paper (Normal)	The <i>Photo Folder</i> in the Data Folder of the cell phone
	W.paper (F.Wide)	
DSC Mode	0.3M	The <i>DSC</i> folder in the Data Folder of a microSD memory card*
	2M	
	5M	
	6M (Full Wide)	
	8M	

\* When a microSD memory card (commercially available) is not inserted, the files are saved to the Data Folder of the cell phone.

- Take care not to cover the lens and optical sensor with a strap or finger.



## Taking a Photo

When the standby screen is displayed, press **○**.

➔ Use **⬅** to select *Camera* and then **○** (Select).

➔ Use **⬆** to select *Photo (DSC Mode)/*

*Photo (W.paper Mode)*.

The monitor screen appears.

➔ Press **○** (Shoot).

The preview screen is displayed.

## Saving a Photo

Press **○** (Save) on the preview screen.

- If you do not want to save the photo, press **⏏** in the preview screen.

## Viewing Photos

When the standby screen is displayed, press **○**.

➔ Use **⬅** to select *Data Folder* and then press **○** (Select).

➔ Use **⬆** to select *Photo Folder* and then press **○** (Select).

➔ Use **⬇** to select a folder and then press **○** (Select).

➔ Use **⬇** to select the photo you want to view and then press **○** (Select).

EZweb is an information service that allows you to enjoy browsing the Internet on your cell phone. You can also download Chaku-Uta-Full-Plus™, Chaku-Uta-Full®, Chaku-Uta®, news, and other contents from web pages.

To use EZweb, you need to apply for an EZweb subscription. If you did not apply for an EZweb subscription at the time of purchase, contact an au shop or the au Customer Service Center. Also, before use, you need to configure initial settings.

- The packet communication charge for EZweb connection applies to the amount of data sent and received, not to the length of time connected.
- In addition to communication charges, some sites charge for providing information.

# Accessing Sites

## ■ Viewing the au one Top

You can access EZweb from the au one Top. A variety of useful and fun sites are available on EZweb. When the standby screen is displayed, press **[E]**, use **[↑]** to select *Top Menu/Search* and then press **[○]** (Select).



**キーワード検索機能 (Search by Keyword)**  
Provides a search function for searching for information by keyword.

**カテゴリ(メニューリスト) (Category (Menu List))**  
Provides a list of various content provider sites.

**トップニュース (Top News)**  
Provides automatic updates of the latest news.

**最新オススメ情報 (Latest News)**  
Introduces up-to-date information concerning entertainment, daily life, etc.

**天気・乗換・占い・テレビ・銀行 (Weather, Transportation, Horoscope, TV & Bank)**  
Provides direct access to these au one services.

**買う (Shopping & Auctions)**  
Provides a list of shopping and auction sites available from your cell phone.

**知る (Tips & Tools)**  
Provides information on sports and stock prices, as well as useful tools such as maps and dictionaries.

**楽しむ (Hobbies & Culture)**  
Provides the latest information, such as games, music, books, hobbies and entertainment.

**暮らす (Lifestyle)**  
Provides travel, restaurant and other lifestyle-oriented information.

**集まる (Community)**  
Provides interesting and useful information that you can use for SNS or blogs.

**au style**  
Introduces information and sites that au recommends.

**とくする情報 (Valuable Information)**  
Presents gifts and push information to the EZweb subscriber for free.



**auお客さまサポート (au Customer Support)**  
Provides information about charges, various applications, au online manual and notices from au.


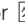
**カンタンアクセス・オープンサイト (Simple Access & Open Site)**  
Provides easy access and introduces open sites.

**災害用伝言板 (Disaster Message Board)**  
Register and confirm safety information in time of disaster.








**ENGLISH**  
Introduces English sites.

## Basic Operations

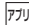
Use  to select the site you want to access and then press  (OK).

Press  or  to return to the previous screen. Hold down either key for at least one second to return to the au one Top.

The following describes the basic operations that are available while accessing sites.

Key Operation	Description
	Exits EZweb.
	Moves the cursor up and down. When there is data available above or below the current screen, scrolls up and down the screen one line at a time.
	When there is data available above or below the current screen, scrolls the screen page by page.  : Scrolls one page up.  : Scrolls one page down. On pages that contain certain types of content, such as Flash content, scrolling page by page may not be possible.
 , 	Returns to the previous screen.

## Bookmarking Frequently Accessed Pages

When the page you want to bookmark is displayed, press  (BrowserMenu).

➔ Use  to select *Favorites* and then press  (OK).

➔ Use  to select *Add Bookmark* and then press  (OK).

- Some pages cannot be bookmarked.

➔ Press  (Reg).



The displayed page is bookmarked, and its title and URL are added to the Bookmark.

- The Bookmark can contain up to 100 titles and URLs.

## Viewing Bookmarked Pages


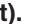

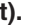

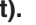

When the standby screen is displayed, press  and then use  to select *EZweb*.

➔ Use  to select *Bookmark(s)* and then press  (Select).

➔ Use  to select the bookmark for the page you want to view and then press  (Connect).  
The cell phone connects to the site.





## Checking Charges



When the standby screen is displayed, press .


- ➔ Use  to select *Function* and then press  (Select).
- ➔ Use  to select *Time/Toll/Sub* and then press  (Select).
- ➔ Use  to select *Inquire Toll* and then press  (Select).
- ➔ Use  to select *OK*.
  - Select the item you want to check and then follow the on-screen instructions.

## Downloading Chaku-Uta-Full-Plus™/Chaku-Uta-Full®/Chaku-Uta®

When the standby screen is displayed, press  and then use  to select *EZweb*.

- ➔ Use  to select *Top Menu/Search* and then press  (Select).
- ➔ Use  to select *カテゴリ (メニューリスト)* (Category (Menu List)) and then press  (OK).

➔ Use  to select *着うたフルプラス (Chaku-Uta-Full-Plus™), 着うたフル・ビデオクリップ (Chaku-Uta-Full®・Video Clip) or 着うた (Chaku-Uta®)* and then press  (Select).

➔ Use  to select the site you want to access and then press  (Select).

The download instructions appear.

- Fee-based information sites require entry of EZ password or Premium EZ password. Follow the on-screen instructions to enter either password. See page 21 for details.

➔ **Follow the on-screen instructions.**

Download is completed.

- Downloaded data is saved automatically to the Data Folder.

➔ Press  (Play).

The downloaded Chaku-Uta-Full-Plus™, Chaku-Uta-Full® or Chaku-Uta® plays.


- This procedure is only an example for the purpose of explanation and may differ from actual procedures. Follow the instructions on the site from which you want to download the data.

Use the EZ News EX to display on the standby screen the latest news, weather forecast, horoscope and others that are delivered free of packet communication charges. You can view detailed information on a news item or weather forecast by selecting the ticker field or info pane.


To make all the EZ News EX services available to you, you need to fill out a separate application form (and pay information charges).

You can use the EZ News EX by making a few simple settings following the EZweb initial setup.

## Basic Operations

**When the standby screen is displayed, press  to select the ticker field.**

You can view detailed information on a news item or weather forecast.

- You can also select the info pane.
- The EZ News EX information is automatically received at no charge. Note, however, that packet communication charges may be incurred for manual updates and connecting to EZweb sites. In this case, a confirmation screen for network connection is displayed.
- The EZ News EX information is updated at regular time intervals.  appears while receiving information.

## Setting EZ News EX

The EZ News EX is available free of charge. You have only to make a few simple settings. After following the procedure in "Initial Setup of E-mail and EZweb" on page 16, configure EZ News EX settings. If you did not configure the EZ News EX settings at the time of the initial setup, follow the steps below.

**When the standby screen is displayed, select the ticker field and then press  (OK).**

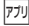


**➔ Follow the on-screen instructions.**

The setup procedure is completed.

- When the standby screen returns, a message asking you to wait for a while until the next update takes place appears in the ticker field.

### Canceling EZ News EX

**When the standby screen is displayed, select the ticker field and then press  (News).**

**➔ Press  (サブメニュー [Submenu]), use  to select サービス利用設定変更・解除 (Service Settings/Cancellation) and then press  (選択 [Select]).**

**➔ Use  to select サービス利用解除 (Service Cancellation) and then press  (選択 [Select]).**

**➔ Follow the on-screen instructions.**

## ■ Changing the Reception Settings for EZ News EX Information

You can change the ring tone, vibrator and LED settings under M216 *NewsFlash Receive* for reception of EZ News EX information.

If you do not want the ring tone to sound when receiving EZ News EX information, set the volume to *OFF*.

Using GPS (Global Positioning System), EZ Navi provides useful positional information services.

**When the standby screen is displayed, press  and then use  to select the EZnavi.**

- The packet communication charges for using EZ Navi services apply to the amount of data sent and received. Some services may require a separate information fee.
- Before using EZ Navi, you must configure initial settings of EZweb (page 16).

## Passenger Seat Navi for People in the Passenger Seat to Check the Route

Passenger Seat Navi guides the passengers to the destination with the best route using voice and map.

Drivers are not allowed to use Passenger Seat Navi.

## Security Navi to Check Where Your Kids Are

The Security Navi application is made up of the following three functions:

いつでも位置確認 (Auto Position Search [monthly charge]),  
エリア通知 (Area Message [no monthly charge]),  
位置確認メール (Position Search Mail [no monthly charge])

Using these functions, you can check the position of an au cell phone that supports Security Navi; and automatically receive a notification from the specified au cell phones when your kids enter (or are in) or leave (or are no longer in) the set area within a predetermined period of time.



## EZ Navi Walk for When You Go Out

Displays various useful menu items for when you are out. There are two menu modes: the Full Mode menu for those who want to use all the convenient functions including the latest features, and the Simple Mode menu with limited functions allowing you to use the service with simple operation.

The following table describes the Full Mode menu.

フリーワード (Free Word)	Search for information by entering keywords such as store names, addresses, and station names.
トータルナビ／地図 (Total Navigation/Map)	Find the most preferable combination of transportation (trains, airplanes, buses and taxis), and check out maps of your current location and places you like to go.
乗換／時刻表 (Connection/Timetable)	Search for train connections, timetables and other public transportation information.
お店／施設／イベント (Shop/Facility/Event)	Search for local stores, facilities or events.
ドライブ／渋滞情報 (Road/Traffic Information)	Check out road traffic information in real time.
オススメ便利メニュー (Useful Menu)	View information on services that are available on PCs, and use advanced functions of EZ Navi Walk that you can enjoy.

設定／会員登録／インフォ  
(Setting/Membership  
Registration/Information)

Configure various settings, sign up as a member or check out various useful information.

- Some of the menu options require a monthly charge.

### ■ The Map of Your Current Location



★ represents your initial location. As you start moving, changes of your location are tracked by continuous positioning and indicated in real time by 🧑.

The 現在の地図 (Map of Your Current Location) option displays the current map in real time.

### ■ 3D Navi

Shows a 3D view at guidance points and around the destination area.

## Evacuate Navi to Guide You Home or to Nearby Evacuation Areas during Disasters

Nearby public evacuation areas or the direction to your home can be determined using the map data pre-installed on the beskey (避難所マップ [Evacuate Area Map]). Other useful contents can be downloaded from the 災害時ナビ (Evacuate Navi) section of the EZweb site.

- Some contents require a monthly charge.
- Use the information on the screen as a reference and always follow the instructions of police, fire and other municipal authorities.
- When using Evacuate Navi, checking your current position may take more time than usual depending on the status of the GPS satellites.

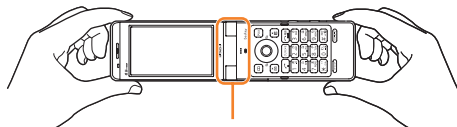
## TV (1Seg)

EZweb Subscription Required

"1Seg", a mobile terrestrial digital television service in Japan, is available on the beskey.

### Using the Built-in TV Antenna

When watching TV (1Seg), take care to avoid covering the built-in TV antenna with your hand in order to ensure proper reception.



Built-in TV antenna

- Before using TV, you must configure initial settings of EZweb (page 16).
- If you are watching TV indoors, you may be able to improve the reception by moving closer to a window.
- The continuous viewing times of TV (1Seg) are as follows. The figures vary according to the usage of data broadcasts.

Continuous viewing time	Using earphones	DBEX ON: Approx. 3 hrs 20 min. DBEX OFF: Approx. 3 hrs 30 min.
	Using the speaker	DBEX ON: Approx. 3 hrs 20 min. DBEX OFF: Approx. 3 hrs 20 min.

- For information about the "1Seg" service, refer to the following homepage.  
The Association for Promotion of Digital Broadcasting

From a PC	<a href="http://www.dpa.or.jp/">http://www.dpa.or.jp/</a>
From a cell phone	<a href="http://www.dpa.or.jp/1seg/k/">http://www.dpa.or.jp/1seg/k/</a>

### Initial Setup of au Media Tuner

To watch TV (1Seg) using the au Media Tuner, you need to configure initial settings.

- When the standby screen is displayed, press **⊙**.
- ➔ Use **⬆** to select **TV** and then press **⊙** (Select).
- ➔ Use **⬆** to select **TV (1Seg)** and then press **⊙** (Select).

Disclaimer notes are displayed.

- ➔ Use **⬆** to check the disclaimer notes, use **⬆** to select **OK**, and then press **⊙** (選択 [Select]).  
The initial setting screen for using the au Media Tuner is displayed.

- Follow the on-screen instructions to configure each setting. Then, the screen for setting TV (1Seg) channels appears.

- ➔ Use **⬆** to select **オート設定 (放送波) (Auto (Broadcasting wave))** and then press **⊙** (選択 [Select]).



Automatic channel scanning begins. When receivable channels are found, the channel setup is completed.

- Select **マニュアル設定 (Manual)** to set the channel manually.

## Watching TV (1Seg)

When the standby screen is displayed, press .

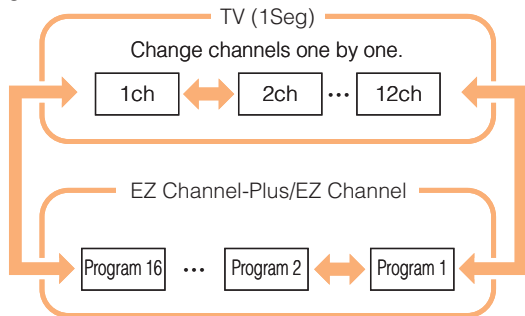
➔ Use  to select TV and then press  (Select).

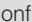
➔ Use  to select TV (1Seg) and then press  (Select).

### To Change Channels

Use /  to change channels.


You can select TV (1Seg) and EZ Channel-Plus/EZ Channel programs.




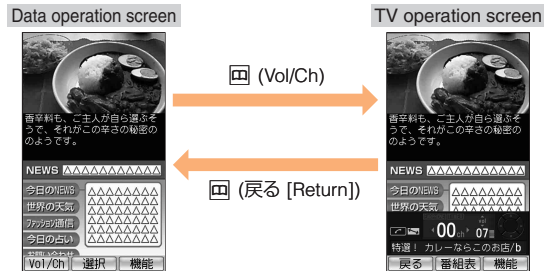
- Before using this feature, you must configure au Media Tuner initial settings (see the procedure on page 49).
- Channels cannot be changed with  when the data operation screen is displayed.

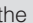
## Basic Operations

Launch TV (1Seg) to start receiving data broadcasts.




The data operation screen appears when a data broadcast is received. Press  (Vol/Ch) on the data operation screen to switch to the TV operation screen.

On the TV operation screen, pressing  switches the display.



- On the TV operation screen, use  to adjust the volume.

## Exiting the au Media Tuner

Press , use  to select はい (YES) and then press  (OK).


## Teens Mode

This "Teens Mode" limits the available functions. It is convenient for parents to control the use of cell phone by their children, for example.



### Setting Teens Mode

When the standby screen is displayed, press .

➔ Use  to select *Function* and then press  (**Select**).

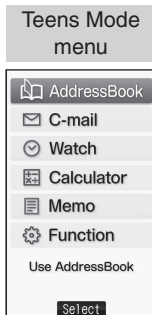
➔ Use  to select *Mode Setup* and then press  (**Select**).

➔ Select *Teens Mode* and then press  (**Select**).

➔ Use  to select *ON* and then press  (**Set**).

➔ **Input the Lock No. and then press  (OK).**

A confirmation screen is displayed. If you select "YES", the Outgoing/Incoming History and Mail Sent/Received History are deleted, and Teens Mode is activated.



In Teens Mode, only certain functions, such as Teens Mode Menu described below and Safety Buzzer and Security Navi, are enabled.

- Making and answering calls, and sending and receiving C-mail

Making and answering calls and sending and receiving C-mail only to the addresses listed in the Address Book are enabled. It is possible to make calls to some numbers, such as 110 (Police), 119 (Fire Department), 118 (Coast Guard Headquarters), even if they are not registered in the Address Book.

- Watch
- Calculator
- Address Book

Only addresses registered in the Address Book in advance can be used. Registering new addresses and editing registered addresses are disabled.

- Memo
  - Function
- Functions related to memo are enabled.  
Some of the functions can be changed.

## In Case of Loss of Your beskey

The Remote Ctrl Lock allows you to remotely activate the Auto Lock, FeliCa Lock, and Address Book Lock, preventing others from using your cell phone.

### Setting Conditions for Activating the Remote Ctrl Lock

You can activate the Remote Ctrl Lock by calling your beskey a set number of times from a registered phone number within a specified period of time.

When the standby screen is displayed, press **⓪**.

- ➔ Use **⓪** to select *Function* and then press **⓪** (Select).
- ➔ Use **⓪** to select *Privacy/Rstr* and then press **⓪** (Select).
- ➔ Use **⓪** to select *Security Lock* and then press **⓪** (Select).
- ➔ Use **⓪** to select *Rem. Ctrl Lock* and then press **⓪** (Select).
- ➔ Enter Lock No., and then press **⓪** (OK).
- ➔ Use **⓪** to select *Valid No.* and then press **⓪** (Select).
- ➔ Use **⓪** to select *[Register New]* and then press **⓪** (Select).

- ➔ Use **⓪** to select *Direct Input*, press **⓪** (OK), enter a phone number, and then press **⓪** (OK).
- ➔ Press **☎** (Comp).
- ➔ Use **⓪** to select *Duration (min)* and then press **⓪** (Select).
- ➔ Enter a time and then press **⓪** (Set).
  - This sets the time limit for receiving the set number of calls after the first call is received.
  - You can set a time from one to ten minutes.
- ➔ Use **⓪** to select *No. of Incm*, and then press **⓪** (Select).
- ➔ Enter a number of calls, and then press **⓪** (Set).
  - This sets the number of calls to receive to activate the Remote Ctrl Lock.
  - You can set a number of calls from three to ten.
- ➔ Press **☎** (Save).
- ➔ Use **⓪** to select *YES* and then press **⓪** (OK).

### Remotely Activating the Remote Ctrl Lock on Your beskey

Call the beskey from the registered phone number repeatedly within the set time limit.

- When the specified number of calls are received, the Remote Ctrl Lock is activated and a message plays telling you that the cell phone is locked.

## Activating the Remote Ctrl Lock by the Security Lock Service


Even if the Remote Ctrl Lock is not set in advance, the Remote Ctrl Lock can be activated by calling au Customer Service Center or completing the application process on au Customer Support from a PC.

The Security Lock Service is available free of charge.

### ■ Calling au Customer Service Center for Activating/Canceling the Remote Ctrl Lock

From an au cell phone: 113 without a prefix (toll free)

From any other cell phone or fixed-line phone:

 0077-7-113 (toll free)

Open 24 hours

Follow the voice guidance to complete the application process.










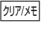
### ■ Activating/Canceling the Remote Ctrl Lock from a PC

Login to au Customer Support (<https://cs.kddi.com/>) and complete the application process by following the on-screen instructions.




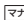

- The Remote Ctrl Lock cannot be activated when the beskey is turned off or out of the service area, or Emission OFF is set to *ON*.


- You must fill out an application to use au Customer Support (the application can be filled out even after your cell phone is lost).

# Troubleshooting

Symptom	Possible Cause	Remedy	Page
Cannot turn on power.	● Is the battery pack charged?	Charge the battery pack.	13
	● Did you hold down  for at least a few seconds?	Hold down  for at least a few seconds.	16
Cannot make calls.	● Is power turned on?	Hold down  for at least a few seconds.	16
	● Is  (out of range indicator) displayed?	Move to a location where  (out of range indicator) is no longer displayed, and try again. Also check the <i>Area Setting</i> .	16, 27
	● Is your hand or a metal object covering the area around the built-in antenna?	Make sure your hand or any other metal object is not covering the area around the built-in antenna.	8
	● Did you enter the phone number starting with the area code?	When making a call to a phone other than a cell phone, you need to enter the area code even if you are inside the same area.	22
Cannot receive calls.	● Is  (out of range indicator) displayed?	Move to a location where  (out of range indicator) is no longer displayed. Also check the <i>Area Setting</i> .	16, 27
	● Is power turned on?	Hold down  for at least a few seconds.	16
No response when a key is pressed.	● Is power turned on?	Hold down  for at least a few seconds.	16
A warning tone sounds and power turns off.	● Is there enough power left in the battery pack?	Charge the battery pack.	13
Calls are answered automatically.	● Is Answer memo turned on?	Hold down  for at least one second to turn off Answer memo.	25



Symptom	Possible Cause	Remedy	Page
Cannot hear the other party.	● Is the earpiece volume too low?	Press  during a call to increase the earpiece volume.	24
When making a call, a beeping sound is heard from the earpiece and a connection cannot be established.	● Is  (out of range indicator) displayed? Or are you in a location where the signal is too weak?	Move to a location where  (out of range indicator) is no longer displayed. Also check the <i>Area Setting</i> .	16, 27
	● Is the wireless line busy or is the phone you are calling on another line?	End the call and try again later.	22
The LED indicator flashes but the ring tone does not play.	● Is manner mode turned on?	Hold down  for at least one second to turn off manner mode.	24
	● Is  (ring tone off indicator) displayed?	Increase the volume of the incoming call ring tone.	25
Cannot charge the battery pack.	● Is the battery pack attached properly?	Attach the battery pack properly.	12
	● Are the plug and connector of the AC adapter inserted properly?	Insert the plug and connector firmly.	13
When the camera is activated, no subject is displayed.	● Is a finger or other object covering the camera lens?	Check the position of the camera lens and remove the obstacle.	38

- For more detailed information, visit the following au troubleshooting sites:
  - From an au cell phone:  ⇒ *Top Menu/Search* ⇒ *auお客さまサポート* (au Customer Support) ⇒ *オンラインマニュアル* (Online Manual) ⇒ *故障診断Q&A* (Troubleshooting FAQ)
  - From a PC: <http://www.kddi.com/customer/service/au/trouble/kosho/index.html>

# Index

## Numeric

1Seg ..... 49

## A

Accessories ..... 7

Address book ..... 32

Dialing ..... 32

Editing ..... 32

Saving ..... 32

Saving a phone number from the incoming or outgoing history ... 33

Answer memo ..... 25

Playback ..... 25

Turning off ..... 25

Turning on ..... 25

## B

Battery level ..... 17

Battery pack ..... 7,12

Battery pack/cover ..... 8

## C

Camera ..... 38

Photo taking tips ..... 38

Taking a photo ..... 39

Cell phone etiquette ..... 2

Changing Your Select keypad ..... 9

Character input ..... 29

Character entry modes ..... 29

Deleting characters ..... 30

Entering characters from the same key ..... 30

Starting a new line ..... 30

Charging the battery pack ..... 13

Checking charges ..... 43

C-mail ..... 37

C-mail safety block ..... 37

Creating and sending ..... 37

Reading received mail ..... 37

Contents ..... 5

## D

Disaster Message Board Service ..... 3

Display ..... 8,17

Domain ..... 20

Downloading Chaku-Uta® ..... 43

Downloading Chaku-Uta-Full® ..... 43

Downloading Chaku-Uta-Full-Plus™ ..... 43

## E

Earpiece volume ..... 24

E-mail ..... 34

Creating and sending ..... 34

Initial settings ..... 16

Reading received mail ..... 35

Replying ..... 35

Viewing attached images ..... 35

E-mail address ..... 16

Available characters ..... 29

Changing ..... 20

Entering .....	30	International Call .....	22
Entering pictograms/Decoration-Emojis/symbols/face marks .....	31	Internet .....	40
Evacuate Navi .....	48	Sites .....	41,42
EZ Navi .....	46	<b>K</b>	
EZ Navi Walk .....	47	Key assignments .....	15
EZ News EX .....	44	<b>L</b>	
Canceling .....	44	Language .....	16
Changing the Reception Settings .....	45	Learning the basics .....	15
Info pane .....	17	Lock No. ....	21
Setting .....	44	<b>M</b>	
Ticker field .....	17	Mail .....	34
EZ password .....	21	C-mail .....	37
EZweb .....	40	E-mail .....	34
Accessing sites .....	41	Mail filters .....	36
au one Top .....	41	Simple settings .....	36
Basic operations .....	42	Main menu .....	18
Initial settings .....	16	Manner mode .....	24
<b>G</b>		<b>N</b>	
Global Function .....	27	Names of parts .....	8
Calling Japan from Overseas .....	28	Notification window .....	16
Obtaining the Latest PRL (Preferred Roaming List) .....	27	<b>O</b>	
Setting the Area .....	27	One-ring calls .....	23
<b>I</b>		Outgoing history .....	23
Incoming history .....	23		
Indicators .....	17		
Initial settings .....	16,49		
au Media Tuner .....	49		
E-mail · EZweb .....	16		
TV (1Seg) .....	49		

## P

Passenger Seat Navi .....	46
Passwords .....	21
Phone (call) .....	22
184/186 .....	22
Answering .....	23
International Call .....	22
Making .....	22
Returning .....	23
Phone number .....	16
Photos .....	38
Photo modes .....	38
Taking .....	39
Viewing .....	39
Playback .....	
Answer memo .....	25
Premium EZ password .....	21

## R

Remote Ctrl Lock .....	52
Replacing the Battery Pack .....	12
Replacing the Select keypad .....	10
Ring tones .....	
Changing the type .....	24
Changing the volume .....	25

## S

Security code .....	21
Security Lock Service .....	53

Security Navi .....	46
Signal strength .....	17
Simple menu .....	19
Sites .....	41
Bookmarking .....	42
Viewing from bookmarks .....	42
Spam .....	36

## T

Teens Mode .....	51
Troubleshooting .....	54
Turning on/off power .....	16
TV (1Seg) .....	49
Antenna .....	49
Basic operations .....	50
Changing channels .....	50
Exiting .....	50
Initial settings .....	49

## V

Viewing .....	
Photos .....	39

## W

Water resistance .....	4
------------------------	---

For inquiries, call: au Customer Service Center

For general information and charges (toll free)

From fixed-line phones:

 0077-7-111


From au cell phones:

157 area code not required

PRESSING ZERO WILL CONNECT YOU TO AN OPERATOR  
AFTER CALLING 157 ON YOUR au CELL PHONE

For loss, theft or damage and operation information  
(toll free)

From fixed-line phones:

 0077-7-113

From au cell phones:

113 area code not required

In case above numbers are not available,

 0120-977-033 (except Okinawa)

 0120-977-699 (Okinawa)

From EZweb:

**Access Method**

EZ ▶ Top Menu/Search ▶ auお客様サポート (au Customer Support) ▶ お問い合わせ (Inquiries)

\* Menu are subject to change without prior notice.

なるほど! au

みんなでつくる、auQ&Aサイト

**Access Method**

EZ ▶ Top Menu/Search ▶ auお客様サポート (au Customer Support) ▶ みんなでQ&A「なるほど! au」 (au User's Forum)

Read this code for an easy  
access to なるほど! au  
(au User's Forum).

▶  
• The packet communication  
charge applies.



### Downloading LISMO Port

LISMO Port and USB driver, which are software  
required for using LISMO on a PC, can be downloaded  
from the au home page.

From PC: <http://www.au.kddi.com/music/dl3>



モバイル・リサイクル・ネットワーク  
環境省 資源循環推進センター

Cell phone and PHS operators collect and recycle unused  
telephones, batteries and battery chargers at stores  
bearing the ♻️ logo regardless of brand and manufacturer  
to protect the environment and reuse valuable resources.

Read this code for an easy  
access to au Online Manual.



EZweb version of the au Online  
Manual can be used with no  
communication charge.  
(Packet communication charges do not apply.)

BMN6590YAA-1  
May 2010, 1st Edition

Sales: KDDI CORPORATION ·  
OKINAWA CELLULAR TELEPHONE COMPANY  
Manufactured by: Hitachi Consumer Electronics Co., Ltd.