

Drive GPS 140 Portable Navigation Device

User Manual



User instructions for operating
the Pharos Drive GPS 140

Legal Notices

Copyright

Pharos Drive GPS 140 User's Manual
Original issue: September 2006

Pharos and the Pharos logo are registered trademarks of Pharos Inc. Other products or system names appearing in this document are trademarks or registered trademarks of their respective owners.

Changes may be made periodically to the information in this publication without obligation to notify any person of such revision or changes. Such changes will be incorporated in new editions of this User's Manual or supplementary documents and publications.

No part of this publication may be reproduced, stored in a retrieval system, or transmitted, in any form or by any means, electronic, mechanical, photocopy, recording, or otherwise, without the prior written permission of Pharos Inc.

DISCLAIMER AND LIMITATION OF LIABILITY

Pharos and its subsidiaries makes no representations or warranties, either expressed or implied, with respect to the contents hereof and specifically disclaims the implied warranties of merchantability or fitness for a particular purpose. Pharos and its subsidiaries assume no responsibility for any damage or loss resulting from the use of the Pharos Drive GPS 140.

NOTE: Record the device ID, serial number, purchase date, and place of purchase information in the space provided below. The serial number is indicated on the label affixed to your Pharos device. All correspondence concerning your unit should include the serial number, device ID, and purchase information.

NOTE: Information in this manual is subject to change without notice.

Revision: 1.00
September 2006

Warnings and Notices

For your safety, do not operate the controls of the product while driving.

GPS satellite signals cannot typically pass through solid materials (except glass). GPS location information is not typically available inside buildings, tunnels, or underground parking lots.

A minimum of 4 GPS satellite signals is needed to calculate your GPS position. Signal reception can be affected by weather events or overhead obstacles (e.g. dense foliage and tall buildings).

Other wireless devices in the vehicle may interfere with the reception of satellite signals and cause the reception to be unstable.

Adapter

Do not attempt to service the unit. There are no serviceable parts inside. Replace the unit if it is damaged or exposed to excess moisture.

Do not use the adapter if the cord becomes damaged.

Connect the adapter to the proper power source. The voltage requirements are found on the product case and/or packaging.

Battery

This unit contains a non-replaceable internal Lithium Ion battery. The battery can burst or explode, releasing hazardous chemicals. To reduce the risk of fire or burns, do not disassemble, crush, puncture, or dispose of in fire or water. Use only the specified charger approved by the manufacturer.

WARNING: The Lithium-Ion battery in the device must be recycled or disposed of properly.

WARNING: Try not to expose the Drive GPS 140 to extreme temperatures for long periods of time.

FCC Warning

The Drive GPS 140 PND has been tested and found to comply with the limits for a Class B digital device in accordance with the specifications in Part 15 of FCC rules.

Operation is subject to the following two conditions: (1) this device may not cause harmful interference, and (2) this device must accept any interference received, including interference that may cause undesired operation. This device generates, uses, and can radiate radio-frequency energy. If it is not installed and used properly, it may cause interference with radio and television reception.

Table of Contents

Chapter 1 Drive GPS 140 PND Features and Specifications	6	Chapter 5 Contacts Management	22
1.1 Pharos Drive GPS 140 PND features	6	5.1 Contacts	22
1.2 Drive GPS 140 Specifications	6	5.1.1 Using Contacts	22
Chapter 2 Getting Started	8	5.1.2 To open Contacts:	22
2.1 Hardware overview	8	5.1.3 Creating a new contact	22
2.1.1 Packing list	8	5.1.4 Editing contact information	23
2.1.2 Front Panel	8	5.1.5 Navigating to a contacts address	23
2.2 Mounting the Drive GPS 140 in your vehicle	10	5.1.6 Importing contacts to your Drive GPS 140.	23
2.2.1 To set up the device on your vehicle:	10	5.1.7 Exporting contacts from your Drive GPS 140.	24
2.3 Using the mounting bracket.	10	5.1.8 Deleting contacts	24
Chapter 3 Using the Drive GPS 140	12	Chapter 6 Entertainment	25
3.1 Drive GPS 140 Operating Basics	12	6.1 Drive GPS 140 Player	25
3.2 To turn on and calibrate the device:	12	6.2 Using the different media players	25
3.3 To configure system settings:	13	6.3 MP3	25
3.4 Additional System settings	15	6.3.1 Using the MP3 player.	25
3.5 Backlight	15	6.3.2 To enter into the different media players.	25
3.6 Volume	16	6.4 Video Player	27
3.7 Battery	16	6.4.1 Using the Video Player.	27
3.8 System Information	17	6.4.2 To enter into the different media players.	27
Chapter 4 Synchronization with a PC	18	6.5 Photo Viewer	28
4.1 Exchanging data between the Drive GPS 140 and your PC	18	6.5.1 Viewing files in Slide Show mode	28
4.1.1 Using the SD slot	18	6.5.2 Using the Photo Album	29
4.1.2 To insert a storage card:	18	Chapter 7 Hands-free calling/Bluetooth	30
4.1.3 To remove a storage card:	18	7.1 Drive GPS 140 Bluetooth	30
4.1.4 Establishing device-PC connection	18	7.1.1 Connecting to your bluetooth mobile phone	30
4.2 Installing Microsoft ActiveSync	19	7.1.2 Making and receiving calls	32
4.2.1 Minimum installation requirements:	19	Chapter 8 Troubleshooting and Maintenance	34
4.2.2 To install Microsoft ActiveSync on your computer:	19	8.1 General troubleshooting	34
4.3 Installing Contacts Manager	20	8.1.1 System stops responding; is “frozen” or “locked up.”	34
4.3.1 To install Contacts Manager:	20	8.1.2 If your device still does not respond, do a “hard reset.”	34
4.3.2 Creating a partnership	21	8.1.3 Users can also perform a “system reset.”	34

8.1.4 Screen responds slowly	34
8.1.5 Inaccurate response to taps.	34
8.1.6 Connection Problems with PC.	34
8.1.7 No GPS connection	34
8.1.8 No sound coming from the device.	34
8.1.9 I can't see my photos.	34
8.1.10 Takes longer than normal time to get a GPS fix.	34
8.1.11 Factory reset does not mean a GPS reset.	34
8.2 Maintenance	35
8.2.1 Storage precautions	35
8.2.2 Accessories and repair precautions	35

Chapter 1 Drive GPS 140 PND Features and Specifications

1.1 Pharos Drive GPS 140 PND features

The Pharos Drive GPS 140 Portable Navigation device is a powerful multifunction GPS navigation and entertainment device.

- Compact size and lightweight
- Integrated GPS receiver for GPS navigation
- Embedded SD card slot ensuring ample data storage for mapping and application software
- Incorporates high-performance GPS antenna
- High-resolution color LCD
- 4" wide touch screen with 16:9 scale
- Bluetooth v2.0 supported with hands-free, headset profiles
- TMC (traffic message channel) supported (optional)
- Multimedia functionality (optional)

1.2 Drive GPS 140 Specifications

Table 1: Drive GPS 140 dimensions and specifications

Category	Item
Overall dimensions (w/o antenna)	146.874 mm x 88.31mm x 26.74 mm
Weight (incl. battery)	270g
Hardware Main unit	
CPU	Samsung S3C2440, 400 MHz, ARM compatible
NAND Flash	256MB, Up to 2GB
RAM	64MB
Bluetooth	Bluetooth v2.0 compatible
Control	5 Touch keys
Navigation pad	Touch screen

Table 1: Drive GPS 140 dimensions and specifications

Category	Item
Indicators	Green/red for power, blue for Bluetooth
Headphone jack	3.5 mm, stereo
Memory Extension	SD Memory Slot
Display	4" Touchscreen, 480 x 272 pixel, TFT, 16.7M colors
Connectors	MiniUSB, external GPS-antenna, external TMC antenna, SD slot
USB Interface	USB v1.1
Software	
Functions	Video playback, image viewer, audio playback, navigation, Contacts, RDS-TMC (optional)
OS	Windows CE 5.0
Bluetooth Profiles	Hands-free, SPP, DUN (optional)
Answer phone, Volume up/down, Dial up, Hang up phone, Reject phone, Caller ID display, Echo cancellation, Dialing-out	
Main Battery	
Type	Rechargeable Li-Ion
Voltage/Capacity	3.7V, 1900mAh
Runtime (GPS on, Back-light on)	Approximately 2h (typ.)
Charge time	4.5 hours

Table 1: Drive GPS 140 dimensions and specifications

Category	Item
GPS	
Chipset	SiRF GSC3
Antenna type	Patch antenna
Very first start time (cold start)	typ. 42 sec
Warm start (after fix and power-off \geq 4hrs)	typ. 35 sec
Hot start (after fix and power-off $<$ 4hrs)	typ. 1 sec
Car Adapter	
Input rating	12-24V
Output rating	5.0V, 2A
Certificates	e-Mark
AC Adapter	
AC-Rating	110-240V, 50-60Hz
DC-Rating	5.0V, 2A
Certificates	CE, UL, TUV

Chapter 2 Getting Started

This chapter describes the hardware interface of the Pharos Drive GPS 140 and its peripherals. Instructions for setting up the device and some basic system operations are also discussed.

NOTE: Although the Drive GPS 140 rechargeable Li-Ion battery comes approximately 30% charged, before using, it is best to connect the AC adapter and plug to power socket and fully charge the battery. The On/Off button will glow yellow when charging.

2.1 Hardware overview

This section introduces the Drive GPS 140 external features and hardware components.

2.1.1 Packing list

The Pharos Drive GPS 140 box contains all of the items listed below:

- Drive GPS 140 Portable Navigation Device
- Car mount kit
- Car charger
- AC adaptor
- USB cable
- User documentation
- Drive GPS 140 Portable Navigation Device Companion CD
- Drive GPS 140 Portable Navigation Device Quick Start Manual
- Drive GPS 140 Portable Navigation Device Warranty Book
- Carrying bag (optional)
- ear phone (optional)

NOTE: AC converters match your region of purchase and many times have different connectors.

2.1.2 Front Panel

Figure 1: Front Panel View



Table 2: Front panel controls

No.	Function	Description
1	Main Menu	Shortcut to main menu home
2	Video player	Shortcut to video player interface
3	Music player	Shortcut to audio player interface
4	Navigation	Goes to Navigation function
5	Microphone	Microphone
6	LED	Glows blue when Bluetooth connected
7	Speaker	Speaker
8	Volume Up and Down	Touch and slide to increase/decrease volume

Figure 2: Top and Bottom view

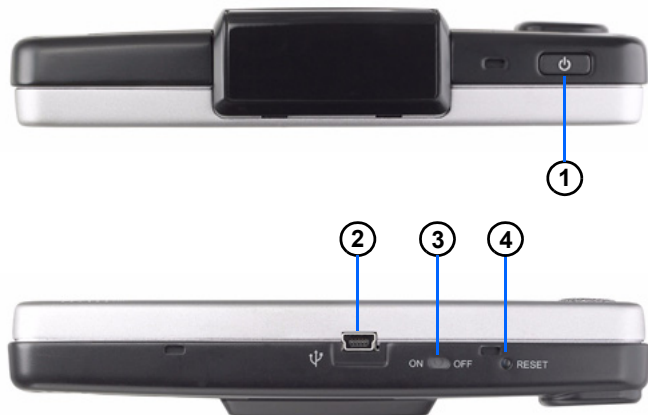


Table 3: Top and Bottom controls

No.	Function	
1	Power button	Normal On/Off power button.
2	USB input	Connects to the USB cable.
3	On/Off	The main power/battery cutoff switch.
4	Reset	Restarts your device with a soft reset.

Figure 3: Left and Right side view

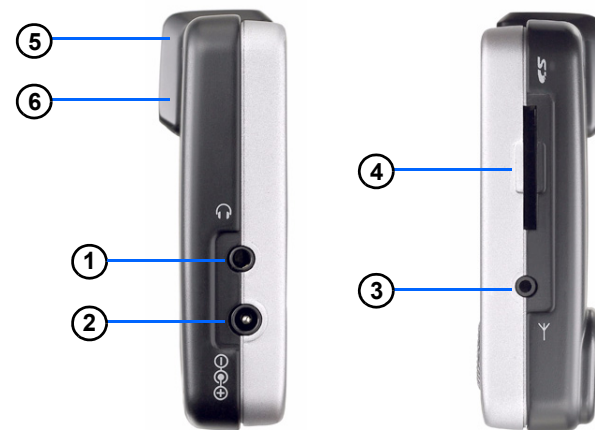


Table 4: Left and Right panel controls

No.	Function	
1	Headphone	Standard stereo headphone jack.
2	DC Power input	For Adapter or car charger
3	FM/TMC antenna	For FM/TMC reception
4	SD slot	Accepts a SD (Secure Digital) card for data storage.
5	GPS antenna	This connector (under rubber dust cover) allows use of an optional external GPS antenna.
6	Light sensor	Automatically adjust Backlight to light conditions (nighttime/daytime).

WARNING: Make sure the SD card is properly inserted and DO NOT remove the SD card during operation of the device.

2.2 Mounting the Drive GPS 140 in your vehicle

The Drive GPS 140 comes with a car mount kit and a car charger to help install your device in your vehicle. The car mount kit uses a suction cup on the windshield to offer flexible mounting options for the Drive GPS 140

WARNING: Some countries prohibit the mounting of any electronic device on the vehicle dashboard. Be sure to check your local laws for acceptable mounting areas before installing the car mount bracket. Please check all local laws before setting up the navigation device in any vehicle.

Occasionally, GPS signal reception is obstructed when the device is mounted in the car. In this case, an external GPS antenna is needed to connect to the device. The antenna connector is located at the top back part of the Drive GPS 140.

2.2.1 To set up the device on your vehicle:

This section shows how to install the car mount kit in your vehicle's windshield using the suction cup. The Drive GPS 140 uses a snap on mounting cradle to use when the device attaches to the car mount. Below is the backside view of the Drive GPS 140 in the cradle.

Figure 4: Drive GPS 140 mounting cradle with slots for car mount



2.3 Using the mounting bracket.

1. Clean the mounting surface with a glass cleaner and a clean cotton cloth.
2. If the ambient temperature is below +15°C (60°F), you can warm the mounting area and the suction cup (e.g. with a hair dryer) to ensure a strong suction bond.
3. Install the car mount on the selected area.
 - a. Fix the suction cup to the selected area with the locking lever facing up for easier access.
 - b. Flip the locking lever away from you to create a vacuum between the suction cup and the window surface.Make sure that the suction is strong and stable before proceeding to the next step.
4. Slide the Drive GPS 140 cradle bracket onto the device connector mount.
5. After you are sure the mounting bracket is safe and secure, attach the Drive GPS 140 into its cradle bracket. It snaps in easily with the quick release connectors.
6. Adjust the car mount for the best viewing angle.
7. Connect the car charger into the cigarette lighter receptacle.

8. The car charger LED indicator will glow blue when powered.
9. Plug the car charger into the side of the Drive GPS 140 and position the cord to an appropriate location.

NOTE: Your car may be required to switch the vehicle ignition into the accessories position to power the cigarette lighter. Your Drive GPS 140 will not charge with the ignition off.

NOTE: The car mount included may look different than the ones shown in this user's manual. However, the operation is similar.

WARNING: Try not to expose the Drive GPS 140 to extreme temperatures for long periods of time.

Figure 5: Power cord plugs into lighter



Chapter 3 Using the Drive GPS 140

3.1 Drive GPS 140 Operating Basics

After fully charging the Drive GPS 140, it is ready to be used. You can now turn it on to calibrate the screen. After screen calibration, proceed to system settings configuration.

3.2 To turn on and calibrate the device:

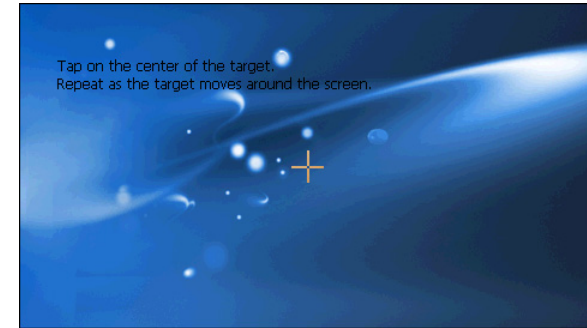
1. Turn on your device the first time by turning on the main on/off switch on the bottom of the device. You will use the power button on the top right panel of the device for daily use (and always keep the main on/off switch on, unless storing the device for longer periods of time).

Figure 6: Main on/off switch and power button



NOTE: When you first turn on your device, you will be asked to calibrate the screen. This process ensures the accuracy of the touchscreen when used.

2. Tap the center of the target as it moves around the screen.



After calibrating the screen, the Main Menu panel displays.



3.3 To configure system settings:

If you intend to start using your Drive GPS 140 at once, we recommend that you configure the language and date/time settings first. The rest of the user preferences can be set up later.

1. Tap “System” in the Main menu.
2. Tap “Language” on the System Menu panel.



NOTE: The controls are easy to use when configuring your device.

1. Tap the “Arrow” tab to select an item.
2. Tap the +/- tab to increase or decrease values.
3. Tap on the return Arrow in the top left corner to:
 - a. Return to the previous screen.
 - b. Save the settings just input.

4. To set the system language settings, tap the forward or backward arrow until the language you want appears.
5. Tap the Up Arrow in the top left to set the language and return to the System Menu.



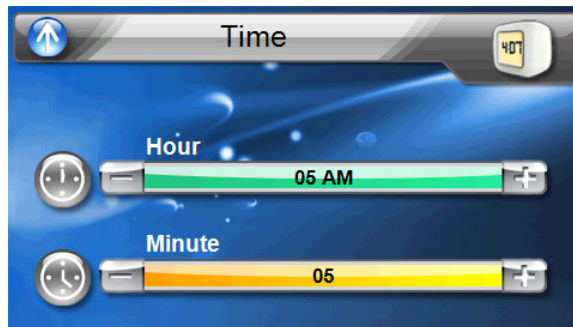
6. To set the system date and time, tap on the Date arrow, Time arrow and Time Zone arrow in the Date & Time System Menu.



7. Tap the correct Year, Month and Day by tapping on the + or -.
8. Tap the Up Arrow in the top left to set the Date and return to the “Date & Time” Menu.



9. Tap the “Time” in the “Date & Time” Menu. You will see the window below. Select the correct time by tapping on the + or - .



10. Tap the Up Arrow in the top left to set the Date and return to the “Date & Time” Menu.

11. Next, tap “Time Zone” in the “Date & Time” Menu.



12. Tap the Up Arrow in the top left to set the Date and return to the “Date & Time” Menu.
13. Tap the Up Arrow in the top left of the “Date & Time” Menu to return to the System Menu.

3.4 Additional System settings

Other System setting can be used to view and adjust your device current preferences. Navigate from the System Menu.



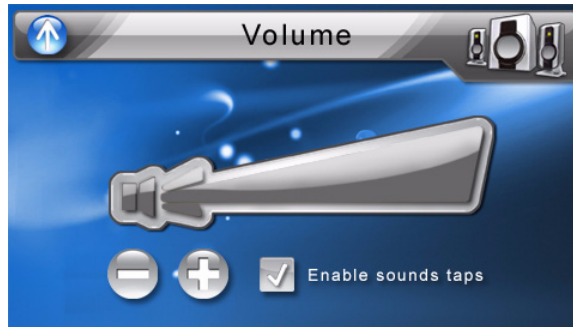
NOTE: Auto backlight adjustment automatically adjusts to daytime and night.

3.5 Backlight

1. Tap the Backlight icon in the System Menu.
2. Adjust the Backlight brightness.
3. Adjust how long you want to wait before Backlight goes into power savings mode while using battery or connected to a power source.
4. Tap the Up arrow to return to the System Menu.

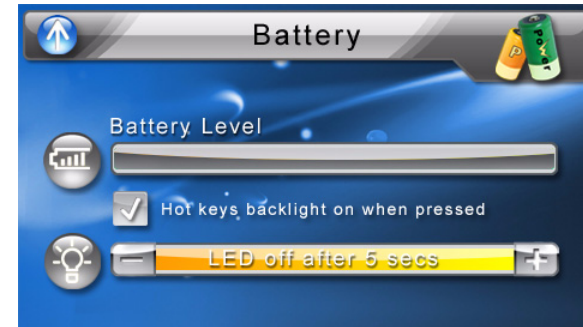
3.6 Volume

1. Tap the Volume icon in the System Menu.
2. Tap + or - to set default system sound volume.
3. Tap the Up arrow to save and return to the System Menu.



3.7 Battery

1. Tap the Battery icon in the System Menu.
2. You can view the remaining battery power in the top bar.
3. Adjust how long you want to wait before the Hot Key LEDs turn off automatically.



NOTE: Check Hot Keys backlight (LED) turn on when pressed. To conserve battery power, these settings should be set to lowest values.

3.8 System Information

1. Tap the Sys Info. icon in the System Menu.
2. You can view the OS version, GPS firmware version and other system information.

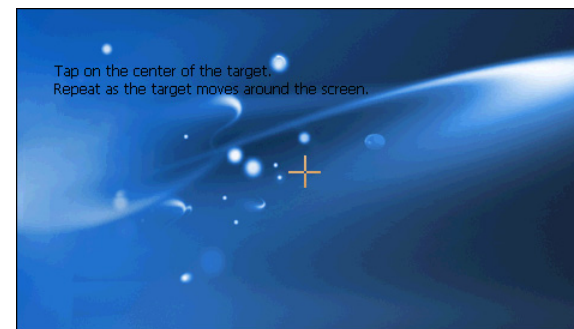


3. Tap the Sys Info. icon in the System Menu.

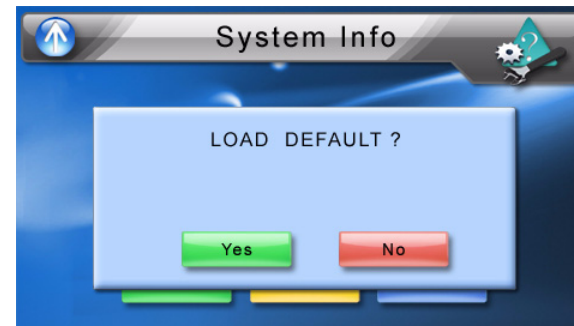
NOTE: Why perform a GPS reset?

If the previous GPS fix position was more than 500 km or 12 hours apart from your current position and time, it will take significantly longer than the standard TTFF time to get a GPS fix. This is due to the nature of the GPS algorithm and rotational velocity between the satellites and planet Earth, and deemed normal. Perform a GPS reset in the main menu to get a faster GPS fix.

4. You can view the OS version, GPS firmware version and also calibrate the device from this screen.



5. For Factory reset, a screen will appear confirming you want to reset your device.



Chapter 4 Synchronization with a PC

4.1 Exchanging data between the Drive GPS 140 and your PC

4.1.1 Using the SD slot

The Drive GPS 140 has an SD slot compatible with a range of SD storage cards that you can use to back up or transfer files and data.

Along with photos, music and videos, the GPS navigation system program is also stored on the storage card. To install and use maps, the program requires that users load the digital maps available in the GPS Navigation SD card that supports the device.

Figure 7: SD card slot



4.1.2 To insert a storage card:

Hold the device securely, then push the card into the slot until you hear an audible system sound; this will signal that the card is already properly seated within the slot. The card is secure when it is not protruding from the slot.

4.1.3 To remove a storage card:

1. Hold the device securely, then push against the top of the card, as if you were pushing it further into the slot, letting the card spring out. An audible system sound will signal that the card has been released.
2. Gently remove the card from the slot.

4.1.4 Establishing device-PC connection

The USB cable that comes with your device enables you to connect the device to your computer. File Explorer displays the Drive GPS 140 device, with the SD card shown as a sub-folder. Once connected, you can use File Explorer to copy digital music and image files into your device's SD card and access them when in Entertainment mode.

- It is advisable to organize files into subfolders. These subfolders will become play lists and help you to manage and better access the files on your device.
- To enable access of multimedia files from your device, the files should be located on the SD card, not on the device's memory.

4.2 Installing Microsoft ActiveSync

Use Microsoft ActiveSync to exchange information between your Drive GPS 140 and a computer running on the Microsoft Windows platform.

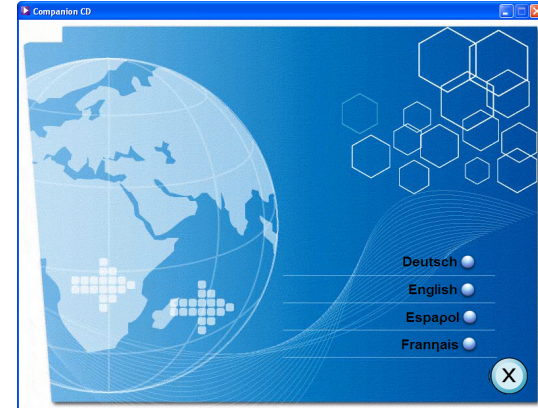
If you have a previous version of the Microsoft ActiveSync installed in your computer, uninstall it first before installing the Microsoft ActiveSync from the Drive GPS 140 CD.

4.2.1 Minimum installation requirements:

- Microsoft Windows XP, 2000, ME, and 98 SE
- Microsoft Outlook 2000 or later required for Contacts synchronization
- Microsoft Internet Explorer 5.0 or later
- Hard disk drive with 12 to 65 MB of available hard disk space
- Available USB port
- CD-ROM drive
- VGA graphics card or compatible video graphics adapter at 256 color or higher

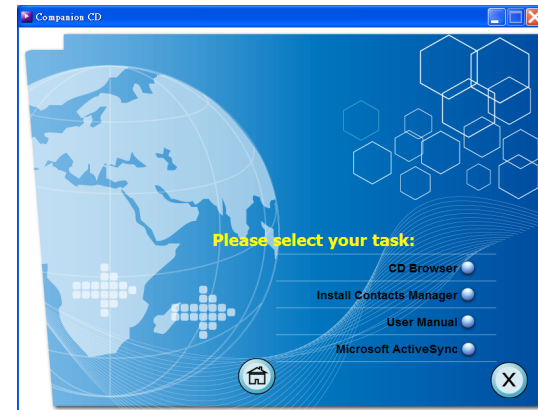
4.2.2 To install Microsoft ActiveSync on your computer:

1. Close any open programs, including those that run at startup, and disable any virus-scanning software.
2. Insert the Pharos Drive GPS 140 Companion CD into your computer's CD-ROM drive.



The CD's welcome page should appear.

3. Click the installation language of your choice.
4. Click Install ActiveSync on the Please select your task screen.

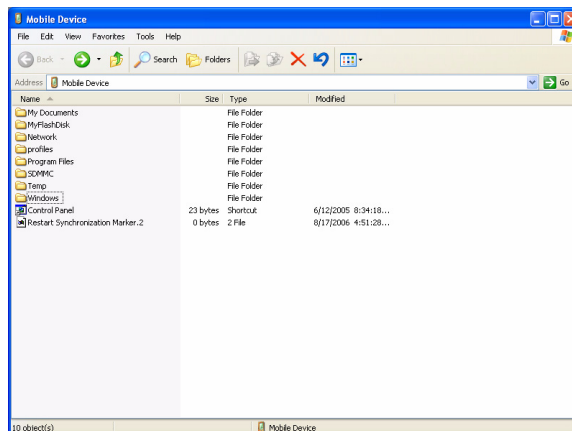


The installation wizard will automatically begin.

5. Follow the on-screen instructions.
After installation, the ActiveSync icon will appear on your computer's system tray (on the lower right-hand corner of the screen).



You can also use Explore in Activesync to look at all the content on your device (as shown below).



Once ActiveSync is installed on your computer, you can use it to transfer files (i.e. MP3 files/photos/videos) between your device and your computer. For more detailed information on how to use ActiveSync on your computer, start ActiveSync on your computer, click Help, then Microsoft ActiveSync Help.

4.3 Installing Contacts Manager

Use Contacts Manager to manage the contact information located on your device and on your computer. This PC program shares the same contact database as the Contacts component of Microsoft Outlook. It only has an import/export function; you still have to create contact entries in Microsoft Outlook Contacts.

4.3.1 To install Contacts Manager:

1. Click Install Contacts Manager on the Please select your task screen. The installation wizard will automatically begin.



2. Follow the on-screen instructions.

3. Click Finish after the installation process is completed.

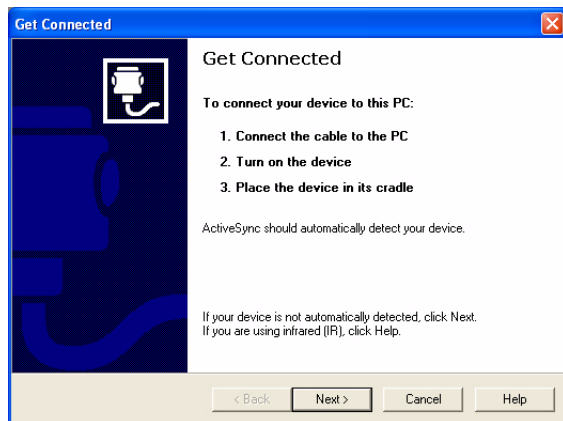
4.3.2 Creating a partnership

After completing the Activesynch installation and Contents manager installation, set up a partnership between your Drive GPS 140 and your computer with the help of the New Partnership setup wizard.

Once you've created a partnership, you will be able to synchronize contact information using ActiveSync.

To create a partnership:

1. If you want to upload files into an SD card for use with your Drive GPS 140, insert the card to the device.



2. Connect the device to your computer using the bundled USB cable.
 - Plug the cable's smaller connector to the USB port on the bottom panel of the device.
 - Plug the USB client connector into an available USB port on your computer.

The New Partnership setup wizard will automatically start on your computer screen.



3. Follow the onscreen instructions.
4. When prompted to select the items to be synchronized, select only ContactSync.

5. Click Finish on the Setup Complete dialog box.

The initial synchronization process will automatically begin when you finish using the wizard. After the initial synchronization, information you've stored in Microsoft Outlook Contacts on your computer will now be available on your Drive GPS 140 without you having to manually input them on the device.

6. Disconnect your device from the computer and you're ready to go. Now, once you have completed the first synchronization process, you can initiate synchronization from your device anytime, using the USB cable.

Chapter 5 Contacts Management

This chapter discusses the basic functions of Contacts on the Drive GPS 140 PND device. Details on how to perform contacts management tasks from your computer is also provided.

Contact files imported/exported to and from your device and computer are saved in .cs format.

5.1 Contacts

Contacts maintains a list of your friends' and colleagues' contact information. These include their E-mail address, street address, multiple phone numbers, and other related information, such as birthdays or anniversary dates.

You can enter multiple address entries for each contact. This program is integrated with GPS navigation enabling users to treat all address entries as possible destination points in navigation mode.

5.1.1 Using Contacts

5.1.2 To open Contacts:

The control pad displays the list of contacts and several command buttons for performing various Contacts tasks.

1. Tap on the Main Menu panel. The Contacts control pad displays.

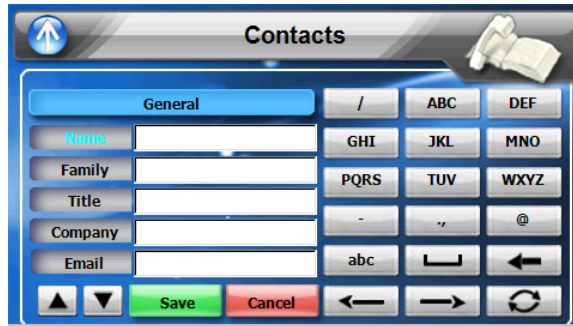


5.1.3 Creating a new contact

1. Tap New.



2. Tap on the space to enter the related information for the new contact.



3. Enter other address and contact information
4. Tap “SAVE” to save the new contact.

5.1.4 Editing contact information

1. In the Contacts control pad, tap the contact you wish to edit.
2. Tap Edit.
3. Enter the new information for the contact.
4. Tap “SAVE” to save the new contact.

5.1.5 Navigating to a contacts address

1. In the Contacts control pad, tap the contact whose address you want to navigate to.
2. Tap GPS

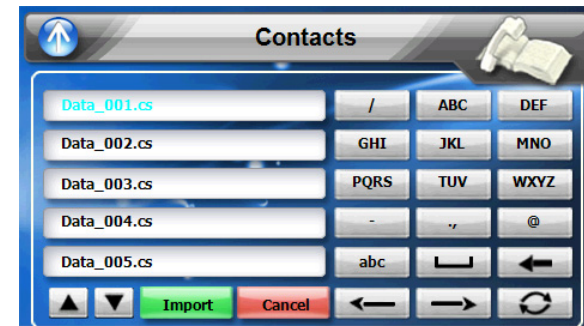
Address entries for the selected contact appears.

3. Tap the address you want to navigate to.
4. Tap Navigate.

The calculated route is shown on the map as a blue line from your current GPS position.

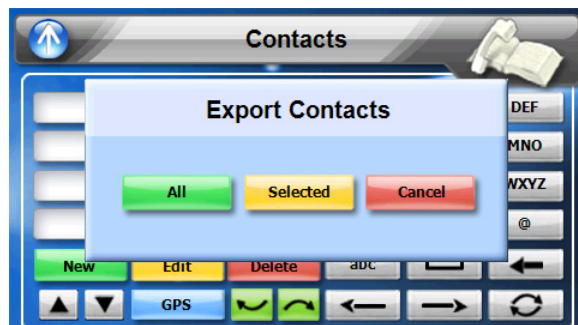
5.1.6 Importing contacts to your Drive GPS 140.

1. Make sure there is a SD storage card in the device.
Imported contact file(s) will be saved to this storage card for access by your Drive GPS 140.
2. Tap in the Contacts control pad.
3. Select contact files (.cs) you want to import (previously set up by Active-synch with Outlook contacts). Selected the contact(s) that will be imported to the SD card installed in your device.
4. Click OK on the completion dialog box.



5.1.7 Exporting contacts from your Drive GPS 140.

1. Insert an SD storage card into the device.
Exported contact file(s) will be saved to this storage card for later access from your computer.
2. Tap in the Contacts control pad.
3. Select whether to export all contacts, or just the currently selected one.
Selected contact(s) will be exported to the SD card installed in your device.
4. Click OK on the completion dialog box.

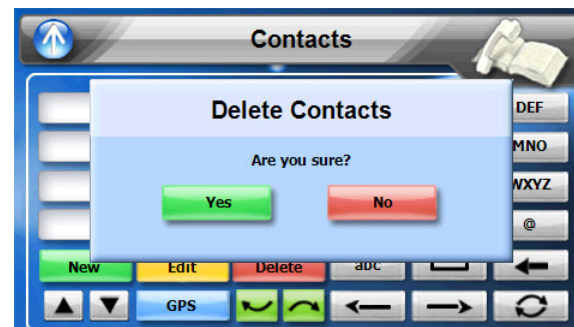


5.1.8 Deleting contacts

1. In the Contacts control pad, find the contact whose address you want to delete. Tap delete.



2. Confirm.



Chapter 6 Entertainment

6.1 Drive GPS 140 Player

The Drive GPS 140 is a fully capable multimedia player that can enhance your portable entertainment. In addition to its navigating function, the Drive GPS 140 is also a mobile entertainment tool that lets you enjoy video files, digital music, and view photos. These functions make the Drive GPS 140 a true multimedia device.

To enable access of multimedia files from your device, the files should be stored on the SD card, not in the device's memory. To transfer these files, do either of the following:

- Using the USB cable to connect the device, with the SD card inside, to your computer, then use File Explorer to copy videos, digital music and image files into the device's SD card folder. The Drive GPS 140 should be recognized with the SD card shown as a sub-folder.
- Using a compatible card reader, directly copy videos, digital music and image files to the SD card.

It is recommended to organize files into subfolders. These folders will make files easier to find and play.

6.2 Using the different media players

6.3 MP3

Enjoy your favorite music on the road. The program features:

- Support for MP3, WMA, and WAV files
- Auto-scanning of supported files in the device's SD card
- Separate volume control enabling you to adjust the playback sound level while retaining the volume level set for system sounds
- Hot key function for volume control
- Playlist support based on sub-directory contents

Each sub directory containing compatible music files is treated as an individual playlist. For a more organized file search, it is advisable to name sub directories based on genre or listening preferences.

6.3.1 Using the MP3 player.

6.3.2 To enter into the different media players.

1. Tap the Entertainment icon in the Main Menu.



2. Tap “MP3 Player” in the Entertainment menu.

NOTE: You can also enter the MP3/music player by pressing the music hot key on the front panel.



3. The MP3 player window below controls playback.



Table 5: MP3 player functions

No.	Function	Description
1	Repeat	Repeats the selection
2	Random play	Plays files random order
3	File collection/playlist	Goes back to main file/folder view
4	Skip backwards/forwards	Advances one song forward or backward
5	Pause/Stop	Stops play

4. File collection menu (from #3 above).



6.4 Video Player

Enjoy your favorite music on the road. The program features:

- Support for MPEG, WMA and MID files
- Auto-scanning of supported files in the device's SD card
- Separate volume control enabling you to adjust the playback sound level while retaining the volume level set for system sounds
- Hot key function for volume control
- Playlist support based on sub-directory contents

Each sub directory containing compatible music files is treated as an individual playlist. For a more organized file search, it is advisable to named sub directories based on genre or listening preferences.

6.4.1 Using the Video Player.

6.4.2 To enter into the different media players.

1. Tap the Entertainment icon in the Main Menu.



2. Tap "Video Player" in the Entertainment menu.

NOTE: You can also enter the Video player by pressing the video hot key on the front panel.



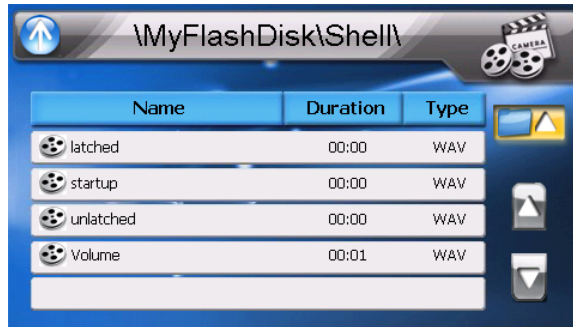
3. Use the Video Player panel below control playback.



Table 6: Video player functions

No.	Function	Description
1	Play	Repeat all/Repeat once
2	Stop	Toggles full screen view
3	File playlist	Goes to main file/folder view
4	Skip backwards/forwards	Advances one video forward or backward
5	Play/Pause/Stop	Play/Pause/Stop

4. Video Play List

**6.5 Photo Viewer**

The Drive GPS 140 has a great photo viewing option that makes it easy to share and view digital photos anywhere on the go. The program features:

- Support for JPEG and BMP (1, 4, 8, and 24-bit) files
- Auto-scanning of supported files in the device's SD card.
- Three viewing modes: Thumbnail, Full Screen, and Slide Show
- Album support based on sub-directory contents

Each subdirectory can hold multiple images and be used as an individual album. For a more organized file search, it is advisable to sort image files into sub directories based on meaningful name or date. An example could be “summer vacation pictures” or “New baby” or “2005 Best.”

6.5.1 Viewing files in Slide Show mode

You have the option to view images in a slide show much like viewing a Power-Point presentation in your computer. Images are adjusted to fit the entire display area and are shown in a 3-second interval.

6.5.2 Using the Photo Album



Table 7: Photo Album Menu

No.	Function	Description
1	Slideshow viewer	Starts slideshow
2	Go up to Folder level	Goes up one folder level
3	Move selection up	Moves selection up
4	Move selection down	Moves selection down

- To enable the Slide Show mode: In Thumbnail or Full Screen mode, tap Slide Show. #1 above

Table 8: Photo Album Viewer

No.	Function
1	Slideshow viewer
2	Rotate photo
3	Zooms in
4	Zooms out
5	Moves to the next photo or back one

Chapter 7 Hands-free calling/Bluetooth

7.1 Drive GPS 140 Bluetooth

Once your Bluetooth-enabled mobile phone is paired with your Drive GPS 140, you can make hands-free phone calls through your Drive GPS 140's integrated microphone and speaker. The Drive GPS 140 makes it easy to make and receive phone calls with ease while on the go.

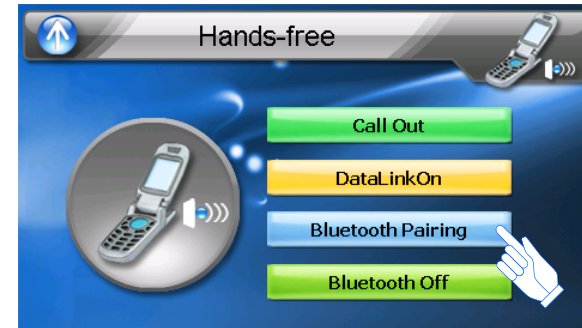
Hands-free calling keeps things safe, letting you keep your eyes on the road, while your Drive GPS 140 integrates seamlessly with your mobile phone. Easy to connect and use, just follow a few quick steps to enjoy the benefits of Hands-free calling.

7.1.1 Connecting to your bluetooth mobile phone

1. Make sure that your mobile phone's bluetooth is turned on.
2. Tap on the Hands-free icon in the main menu of the Drive GPS 140.



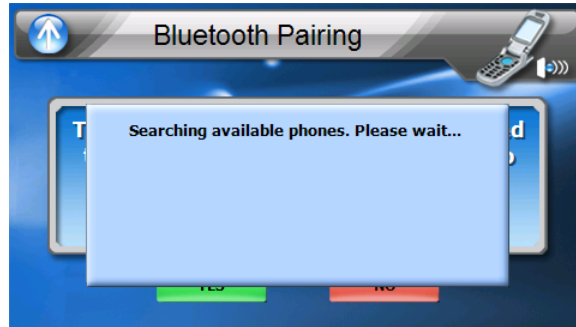
3. For first time use, you will next see the Handsfree calling window giving a choice of "Call out" or "BLuetooth Pairing." Choose "Bluetooth Pairing" if this is the first time using the Drive GPS 140 with your cell phone.



4. Next you will get a message asking you to proceed to pair with your mobile phone. Make sure you phone is ready before pressing yes.



- Next you will get a message saying “Searching all available Bluetooth devices. Please wait.....” as shown below.

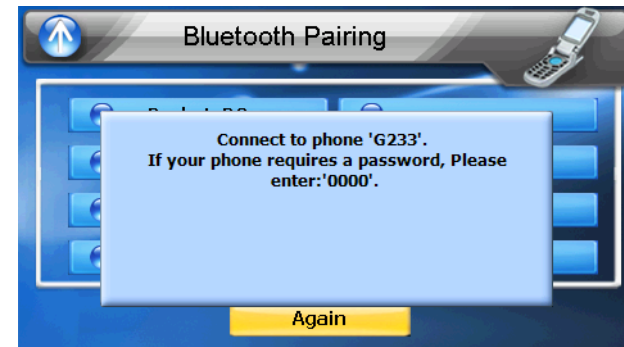


- If no devices are available, a “Can’t find any BT devices” message will appear.
- Otherwise, you will see a list of Bluetooth devices that are within proximity of your Drive GPS 140. Tap “Again” if you do not see your device.



- Next, select the device you want to connect to. In this case, let's connect to Moto V3.
- The mobile phone will often require you to enter a password to connect the device. Enter 0000 on the mobile phone in this case.

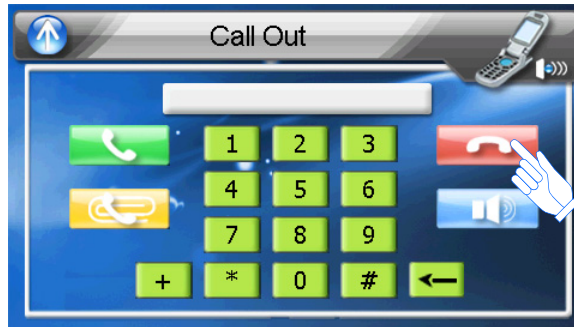
NOTE: If your mobile phone gives a choice of device states when connecting, always choose “Hands-free.” Normally the phone and the Drive GPS 140 automatically makes this connection.



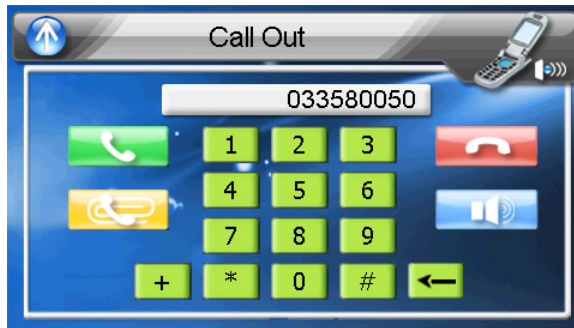
- That's it, your mobile phone and the Drive GPS 140 establish a Bluetooth connection and now you are ready to make and receive calls. A confirmation window appears in the Drive GPS 140 to confirm the connection was made.

7.1.2 Making and receiving calls

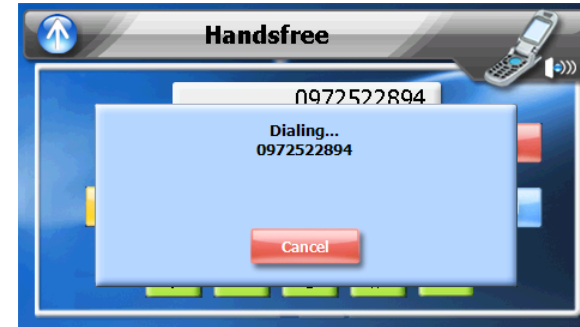
1. The Hands-free calling screen appears that will let you control the function as well as dial from your Drive GPS 140 as long as the Bluetooth connection is maintained from your mobile phone. Now you can tap the “Call” icon to place a call.



2. The number dialed is displayed in the display.



3. The screen will show the number connecting. Tap cancel to abort the call.



4. An Icon will appear in the system menu telling you Hands-free calling is available.



5. Redial lets you easily view the most recent phone numbers you connected to.



6. Start enjoying the convenience and safety of hands-free calling with your Drive GPS 140.

Chapter 8 Troubleshooting and Maintenance

8.1 General troubleshooting

8.1.1 System stops responding; is “frozen” or “locked up.”

- To reset the Drive GPS 140, take a sharp object like a pen or paper click and depress the reset button on the bottom of the device. This is called a “soft reset.”

8.1.2 If your device still does not respond, do a “hard reset.”

- To do a “hard reset,” Disconnect all cables, including the AC adapter, from your device. Use a sharp object pen to slide the primary ON/OFF switch on the bottom of the device to the OFF (left) position.

8.1.3 Users can also perform a “system reset.”

- To do a “system reset,” in the Main menu, tap System, then tap System Info. This will allow you to do a factory reset (restore to default settings), reset the GPS and recalibrate the touchscreen interface.

8.1.4 Screen responds slowly

- Make sure you have enough battery power.

8.1.5 Inaccurate response to taps.

- Recalibrate the touch screen.

8.1.6 Connection Problems with PC.

- Make sure that the cable is securely plugged into the USB port on your computer and on the device. Connect the USB cable directly to your computer—do not run the cable through a USB hub.
- Reset your device before connecting the cable. Always disconnect your device before you restart your computer.

8.1.7 No GPS connection

- Make sure that the GPS antenna has a clear view of the sky. Note that the GPS reception can be affected by:
 - Bad weather
 - Dense overhead obstacles (e.g. trees and tall buildings)
 - Other wireless devices in the car

8.1.8 No sound coming from the device.

- Make sure mute is not selected for Volume in system settings. The built-in speaker turns off when the headphone jack is being used.

8.1.9 I can’t see my photos.

- Make sure you are using supported image formats, JPG and BMP.

8.1.10 Takes longer than normal time to get a GPS fix.

- If the previous GPS fix position was more than 500 km or 12 hours apart from your current position and time, it will take significantly longer than the standard TTFF time to get a GPS fix. This is due to the nature of the GPS algorithm and rotational velocity between the satellites and planet Earth, and deemed normal.
- Perform a GPS reset in the main menu to get a faster GPS fix.

8.1.11 Factory reset does not mean a GPS reset.

- No. The Factory Reset function only resets the OS settings to their default factory values; it will not reset the GPS settings.

8.2 Maintenance

- Keep your device away from excessive moisture and extreme temperatures.
- Avoid exposing your device to direct sunlight or strong ultraviolet light for extended periods of time.
- Do not drop your device or subject it to severe shock.

- Do not subject your device to sudden and severe temperature changes. This could cause moisture condensation inside the unit, which could damage your device. In the event of moisture condensation, allow the device to dry out completely before use.

- The screen surface can be easily scratched. Sharp objects may scratch the screen. You may use non-adhesive generic screen protectors designed specifically for use on portable devices with LCD panels to help protect the screen from minor scratches.

- Never clean your device with it powered on.

- Never use organic solvents such as benzene or paint thinner to clean your device. Use of these solvents can cause deformation or discoloration.

- Use a soft, clean, lint-free cloth to clean the display screen. Moistened LCD screen wipes could also be used as required.
- Never attempt to disassemble, repair or make any modifications to your device. Disassembly, modification or any attempt at repair could cause damage to your device and even bodily injury or property damage and will void any warranty.

8.2.1 Storage precautions

- Do not store your device anywhere it may be exposed to water or in conditions of high humidity.

- When the device is not in use for an extended period of time, bring it indoors and store it in cool dry area.

8.2.2 Accessories and repair precautions

- Only authorized accessories should be use with the device. The use of incompatible accessories could result in bodily injury and/or damage to the device.
- The use of unauthorized accessories will also void your warranty.
- Never attempt to disassemble, repair or make any modification to your device.

Index

Symbols

.cs format 22

A

AC adapter 8
AC-Rating 7
ActiveSync 3.8 19
ARM 6

B

Backlight 15
Battery Level 16
Battery Voltage 6
Bluetooth 6
Bluetooth v2.0 6
BMP 28
Bottom 9

C

Calibrate 17
Calibration 12
Car charger 10
CE 6, 7
Charge 6
Chipset 7
Contacts 22
CPU 6

D

Date 14
Day 14
DC-Rating 7
Dimensions 6
DUN 6

E

e-Mark 7

F

Features 6
File Explorer 25
FM antenna 9
Front Panel View 8, 9
Full Screen 28

G

GPS firmware 17

H

Hands-free 6, 30
Hard reset 34
Headphone 6, 9
Hot Keys 16

I

Input 7

J

JPEG 28

L

Language 13
Li-Ion 6

M

Microsoft ActiveSync 19
Month 14
Mounting cradle 10
MP3 25

N

NAND 6

O

OS version 17

P

Packing list 8
Partnership 21

R

RAM 6
RDS-TMC 6
Recalibrate 34
Reset 9
Revision 2
Runtime 6

S

S3C2440 6
Samsung 6
SD 6
SiRF 7
Slide Show 28
Soft reset 34
Specifications 6
SPP 6
Synchronization 18
System Information 17

T

TFT 6
Thumbnail 28
Time 14
Time Zone 14
TMC 6
Traffic message channel 6
Troubleshooting 34
TUV 7

U

UL 7
USB cable 18
USB v1.1 6

V

Video 27
Video Play List 28
Volume 16

W

Warranty 8
WAV 25
Weight 6
Windows CE 5.0 6
WMA 25

Y

Year 14