



Setup Guide

1 Check the Contents 检查内容



• Printer
打印机

• Power cord
电源线

• This guide
本说明书

• Driver CD Kit
驱动程序光盘工具包

• PS End User License Agreement
PS终端用户许可协议

• Safety Guide
安全说明书

• PostScript Driver Library CD
PostScript驱动程序库CD

• PS Driver Contract
PS驱动程序协议

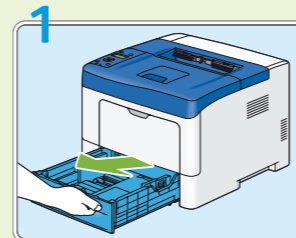
Point

Prepare a USB cable (2 m recommended) or a network cable and paper*1
准备USB电缆（推荐2米）或网络电缆以及打印纸*1。

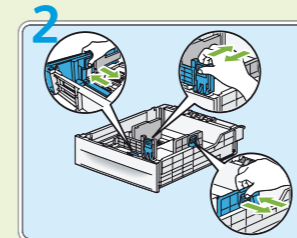
*1 The printer does not support inkjet paper.
*1 打印机不支持喷墨打印纸。

*1 打印机不支持喷墨打印纸。

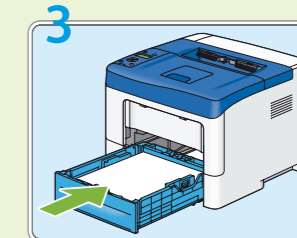
4 Load paper in the tray 在纸盘中装入纸张



Pull the tray out of the printer.
将纸盘从打印机中拉出。



Adjust the paper guides, and align the width guides against the edges of the paper.
调整导纸器，使宽度导纸器与纸张边缘对齐。



After confirming that the guides are securely adjusted, insert the tray into the printer.
调整好导纸器后，将纸盘插入打印机。

Point

When setting up the printer, load A4 size paper or larger. When loading Legal size or user-specified print media, slide the extendable part of the tray while pinching the lever.

设置打印机时，装入A4纸或尺寸更大的纸张。装入Legal尺寸纸张或用户指定的打印介质时，捏住导杆并同时滑动纸盘的可延长部分。

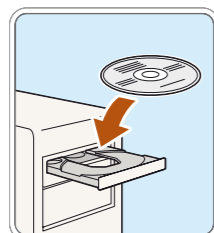
Watching the video setup 观看视频设置

Using this guide 使用本说明书

2a Insert the Driver CD Kit 插入驱动程序光盘工具包

Note

Driver CD Kit does not support Windows 98/Me/2000.
驱动程序光盘工具包不支持 Windows 98/Me/2000。



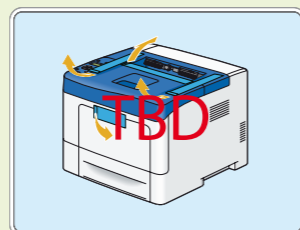
Select the [Start Setup] button, and follow the instructions.
选择 [开始设置] 按钮，然后按照说明进行操作。

Point

If the above screen does not appear automatically, double-click eznavi.exe in the SetupVideo folder included on the Driver CD Kit.

如果未自动显示上面的画面，请在驱动程序光盘工具包工具包中的 SetupVideo 文件夹下双击 eznavi.exe。

2b Remove the packaging tapes 拆下包装胶带



3 Install optional accessories 安装可选附件

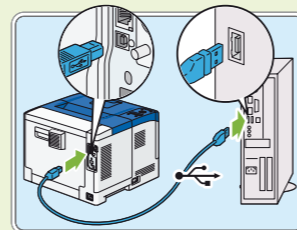
Refer to the installation guide provided with your accessory.

请参阅附件随附的安装说明书。

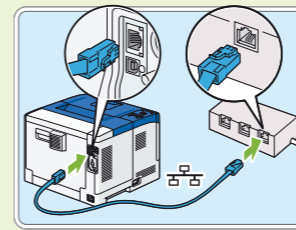
5 Connect a USB or Network Cable 连接USB电缆或网络电缆

Note

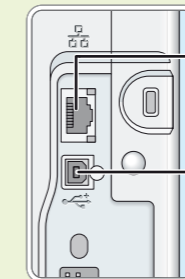
For wireless connection, this step is not necessary.
对于无线连接，本步骤可忽略。



USB connection
USB连接



Wired network connection
有线网络连接



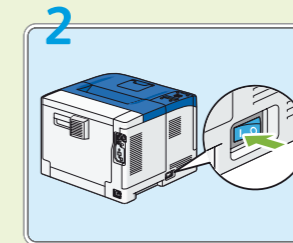
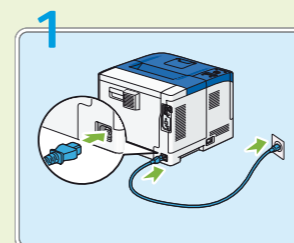
Network connector
网络接口
USB connector
USB接口

Point

Do not select anything in New Hardware Found Wizard that appears when the printer and your computer are connected via a USB cable.

使用USB电缆连接打印机和计算机时，请勿在弹出的“找到新硬件向导”中进行任何选择。

6 Turn on the printer 打开打印机电源



Complete! 完成!

Continued overleaf 接下页

When connecting via a wired network, go to step 7. When connecting via a USB cable, go to step 9. When connecting via wireless, refer to User Guide to setup wireless settings, and then go to step 9.

如果通过有线网络连接，请转到步骤7。如果通过USB电缆连接，请转到步骤9。如果通过无线连接，请参照《使用说明书》设置无线设定，然后转到步骤9。

Note

- For wireless connection, wireless printer adapter (sold separately) is required.
- The wireless printer adapter is not supplied in some regions.
- 对于无线连接，需要使用无线打印机适配器（单独购买）。
- 在某些区域不提供无线打印机适配器。

7 Set the IP Address 设置IP地址

This step explains how to set an IPv4 address on the operator panel. For information on how to set an IPv6 address, refer to the User Guide included on the Driver CD Kit.

此步骤介绍了如何通过操作面板设置IPv4地址。有关IPv6地址设置方法的信息，请参阅驱动程序光盘工具包中包含的《使用说明书》。

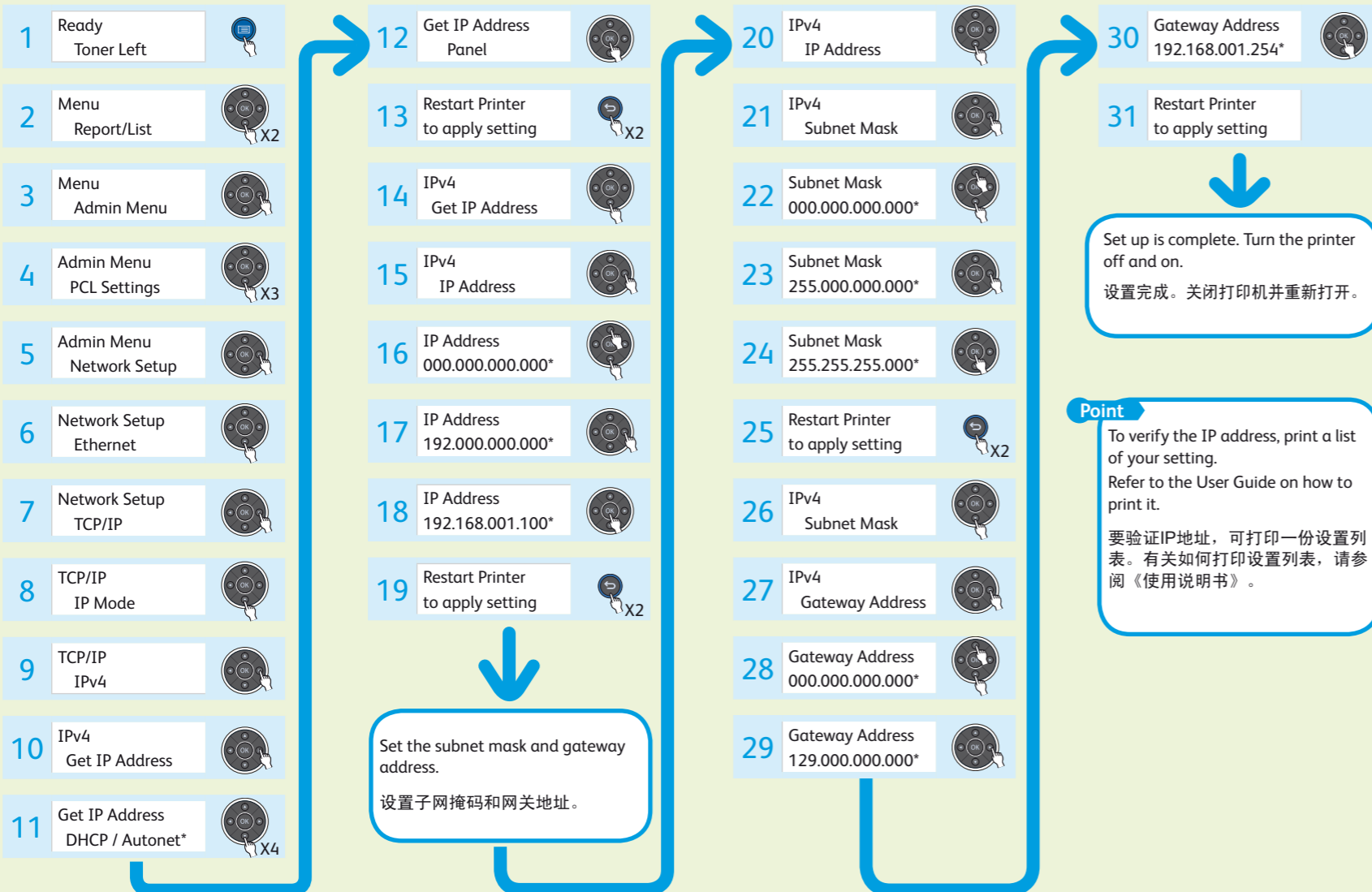
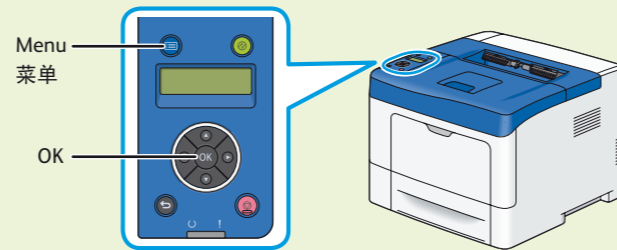
Note

The IP address and gateway address used here are examples. To get your IP address, talk to your network administrator.

此处使用的IP地址和网关地址仅为示例。要获取IP地址，请联系网络管理员。

Point

To return to 1, press the (Menu) button. 要返回1，请按 (菜单) 按钮。



8 Other Network Settings 其他网络设置

For information on other network settings, refer to the CD-ROM Documentation (HTML) included on the Driver CD Kit:
Driver CD Kit top menu > [Documentation] tab > [CD-ROM Documentation (HTML)]
有关其他网络设置的信息，请参阅驱动程序光盘工具包中包含的CD-ROM文档(HTML)：
驱动程序光盘工具包顶部菜单 > [Documentation] 选项卡 > [CD-ROM说明文件(HTML)]。

9 Install Print Drivers 安装打印驱动程序



Do not select anything in New Hardware Found Wizard that appears when the printer and your computer are connected via a USB cable.

使用USB电缆连接打印机和计算机时，请勿在弹出的“找到新硬件向导”中进行任何选择。

Point

If the above screen does not appear automatically, double-click eznavi.exe in the SetupVideo folder included on the Driver CD Kit. 如果未自动显示上面的画面，请在驱动程序光盘工具包中的SetupVideo文件夹下双击eznavi.exe。

Note

For information on how to install PostScript driver on a Macintosh computer, see the PostScript User Guide. 有关如何在Macintosh计算机上安装PostScript驱动程序的信息，请参阅PostScript User Guide。

When connecting via TCP/IP

1. Click [Installing Driver and Software].
2. Follow the instructions displayed on the installer screen.

如果通过TCP/IP连接

1. 单击[安装驱动程序及软件]。
2. 按照安装程序画面上显示的说明进行操作。

When connecting via USB

1. Click [Installing Driver and Software].
2. Select the [Documentation] tab.
3. Select [CD-ROM Documentation (HTML)].
4. Select [DocuPrint P455 d] > [Driver Installation] > [Installing a Printer Connected via USB], and follow the instructions.

如果通过USB连接

1. 单击[安装驱动程序及软件]。
2. 选择[Documentation]选项卡。
3. 选择[CD-ROM说明文件(HTML)]。
4. 选择[DocuPrint P455 d]>[驱动程序安装]>[安装通过USB端口连接的打印机]，然后按照说明进行操作。

Setup is Complete! 设置完成!