

**3M**

# streaming projector

User's Manual



Instant big screen  
movie watching!

Powered by: **Roku**



Intended Use Statement .....	6
Safety Information .....	6
Introduction .....	10
Getting Started .....	19
Remote Control .....	31
Connecting to other devices.....	33
Menu .....	40
Troubleshooting .....	44
Product Specification .....	49
Accessory List .....	52
Limited Warranty.....	53
Regulatory Notices .....	54

## Important Notice

All statements, technical information, and recommendations related to 3M's products are based on information believed to be reliable, but the accuracy or completeness is not guaranteed. Before using this product, you must evaluate it and determine if it is suitable for your intended application. You assume all risks and liability associated with such use. Any statements related to the product which are not contained in 3M's current publications, or any contrary statements contained on your purchase order shall have no force or effect unless expressly set forth in a written agreement signed by an authorized officer of 3M.

## Technical Support

For technical support, call 1-866-631-1656 or email [meetings@mmm.com](mailto:meetings@mmm.com)

## Copyright, Trademarks and Properties Notices

3M and the 3M logo are trademarks of 3M Company. Used under license in Canada.

MHL and the MHL logo are a trademark, registered trademark or service mark of MHL, LLC in the United States and/or other countries.

High Definition Multimedia Interface (HDMI) is a registered trademark of HDMI Licensing, LLC in the United States and/or other countries.

iPad is a trademark of Apple, Inc., registered in the U.S. and other countries.

Roku, Roku Streaming Stick, and the Roku logo are registered trademarks of Roku, Inc.

DLP and the DLP® logo are trademarks of Texas Instruments.

DisplayPort, Certified DisplayPort, Dual-mode DisplayPort and VESA are registered trademarks of the Video Electronics Standards Association.

microSD™ and the microSD logo are trademarks of the SD Card Association.

All other product names are trademarks, registered trademarks, or servicemarks of their respective owners.

## Intended Use Statement

The 3M™ Streaming Projector is designed to operate with the 3M Power Adapter and an HDMI® or MHL™ enabled device in environments that meet these conditions.

- 0° to 35°C (32° to 95°F)
- 10–80% RH (without condensation)
- 0–1829 m (0–6000 feet) above sea level

Continued exposure to smoke, grease, oil and other airborne contaminants can affect the operation or performance of the projector. Use of this product in adverse conditions will void the product warranty.

## Safety Information

Please read, understand, and follow all safety information contained in these instructions prior to the use of this projector. Retain these instructions for future reference.

### Explanation of Signal Word Consequences

- |   |  |
|---|--|
| <p><b>⚠ Warning:</b></p> <p><b>⚠ Caution:</b></p> | <p>Indicates a potentially hazardous situation, which, if not avoided, could result in death or serious injury and/or property damage.</p> <p>Indicates a potentially hazardous situation, which, if not avoided, may result in minor or moderate injury and/or property damage.</p> |
|---|--|

## Warning

To reduce the risk associated with hazardous voltage, fire, explosion, battery leakage or overheating which may cause serious injury or death:

- Do not leave the product in a car or in direct sunlight for extended periods of time. (-20 C to 70 C)
- Do not disassemble/ modify the product or attempt to remove the battery.
- Do not attempt to service this product. Contact manufacturer.
- Do not use the product in water or a damp environment.
- Do not use a damaged product, cables or power adapter.
- Charge with 3M power adapter only.
- Do not dispose of the remote control battery by incineration or fire.

To reduce the risks associated with driver distraction:

- Do not shine light into the driver's eyes.
- Driver should not operate product while driving.

To reduce the risks associated with choking:

- Keep the remote control, all cables, and small parts away from young children.

**To reduce the risks associated with hearing loss:**

- Be sure to read earphone manufacturer's instructions with respect to volume level.
- User is responsible to set a safe volume level.

**To reduce the risk of injury to small children:**

- Supervise the use of this product by small children.
- Keep small children away from the projector lens when the product is powered on.



## Caution

To reduce the risk associated with environmental disposal hazards which may cause minor or moderate injury:

- Dispose of the product and accessories in accordance with the federal, state, local or regional laws which cover the disposal of electrical and electronic waste.

To reduce the risks associated with projector LED bright light:

- Do not look directly into the projector lens or shine it into anyone's eyes.

To reduce the risks associated with tripping and falling:

- Position the cables so that they are not a tripping hazard.

To reduce the risk of muscle strain which if not avoided may cause minor or moderate injury:

- Do not mount or position the projector in awkward viewing positions.

**SAVE THESE INSTRUCTIONS**

# Introduction

## Thank You

This product has been produced in accordance with 3M quality and safety standards to provide smooth and trouble-free use in the years to come. For optimum performance, please follow the operating instructions carefully.

## Product Features

Introducing the 3M™ Streaming Projector Powered by Roku®. Experience your favorite online entertainment on the big screen with instant cinema. Let the magic of projection bring your friends and family together like never before. Enjoy your favorite movies and shows at 120" diagonal. Made using the same technology found in movie theater projectors, it delivers a stunning picture. It's time to turn your entertainment into an epic event.

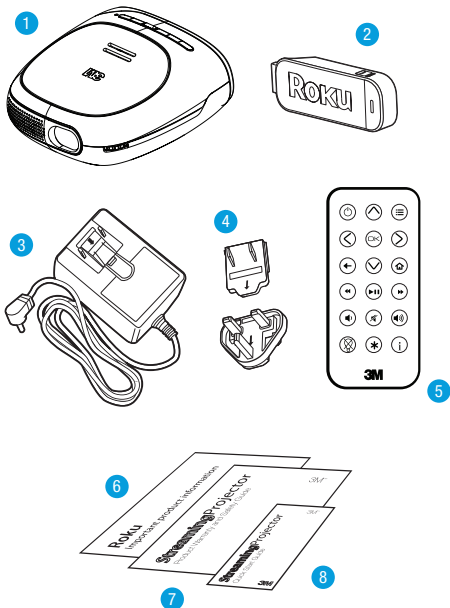
- **What's on.** What isn't? With more than 600 channels to choose from, your choices are almost endless. Choose from thousands of movies.
- **Game on.** The 3M™ Streaming Projector is compatible with the Roku® Game Remote for Streaming Stick™ (available late October, sold separately), so you can fling some birds, spin the wheel or question some answers.

- **Two for one.** Not only can you stream movies and shows on the big screen, but with the Roku® Remote Control for Streaming Stick™ (available late October, sold separately), you can use the Roku Streaming Stick™ to watch online entertainment on a MHL enabled TV. Just plug the Roku Streaming Stick™ into your MHL enabled device, and you're ready to start the show.
- **Twice the fun.** Connect the projector to any device with a MHL or HDMI output for larger-than-life viewing. Watch the funny clips and videos you have stored on your phone, or the movies and shows saved on your computer or tablet.
- **Sounds good.** Audio options for a theater-like experience. Your streaming projector comes with a built-in speaker, but you can also use headphones or speakers, or connect it to your home audio system for an even bigger experience.
- **Never-ending story.** Battery life that lasts and lasts. 2+ hours of battery life per charge (or runs continuously on AC power).
- **Epic proportions.** The big screen in your home. Bright, crisp, 120" diagonal picture is nearly 3x bigger than a 42" screen.

## Package Contents

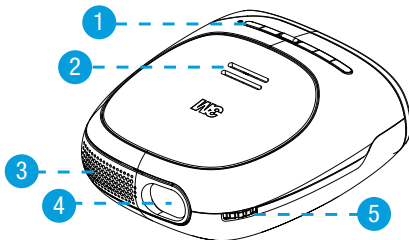
The 3M™ Streaming Projector Power By Roku® comes with the following items. If you are missing any of these items please contact 3M.

- 1 3M Streaming Projector SPR1000
- 2 Roku® Streaming Stick
- 3 Power Adapter
- 4 Outlet Adapters (2)
- 5 Remote Control
- 6 Roku Important Product Information
- 7 Product Warranty and Safety Guide
- 8 Quick Start Guide

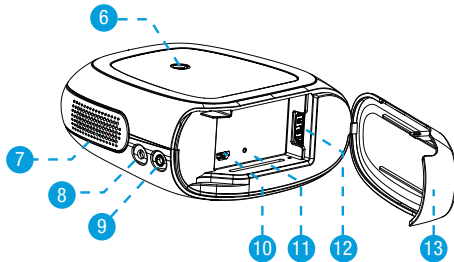


## Parts of Projector

### Front-Top View

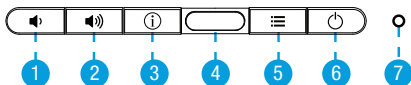


- 1 Button Panel – Turn on and control projector
- 2 Speaker
- 3 Air Vent – Do not block the air vents while projector is operating or cooling down. This will cause projector to overheat and automatically turn off.
- 4 Projection Lens
- 5 Focus Wheel – Adjusts the image sharpness

**Bottom-Rear View**

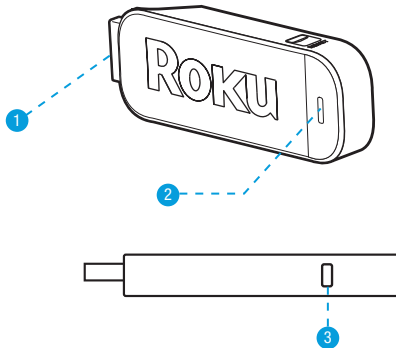
- 6 Tripod Mount
- 7 Air Vents – Do not block fans or vents while projector is operating or cooling down. This will cause projector to overheat and automatically turn off.
- 8 DC Input – Powers the projector or charges the battery using the 3M power supply.
- 9 Audio Output – Allows you to use earphones or external speakers instead of the built-in speaker.
- 10 Service Port
- 11 Projector Reset Button
- 12 HDMI/MHL Port – Receives HDMI and MHL signal from compatible video devices
- 13 Cover

## Projector Button Panel



- 1 Volume Down Button – Turns down speaker or audio out level. Down and Left Arrow for projector menu system.
- 2 Volume Up Button – Turns up speaker or audio out level. Up and Right Arrow for projector menu system.
- 3 Information Button – Opens the projector information window.
- 4 Remote Control Receiver - Accepts commands from 3M remote control.
- 5 Menu Button – Opens the projector menu.
- 6 Power Button – Powers the projector on and off.
- 7 Status Light – Provides the projector's power and charging status.

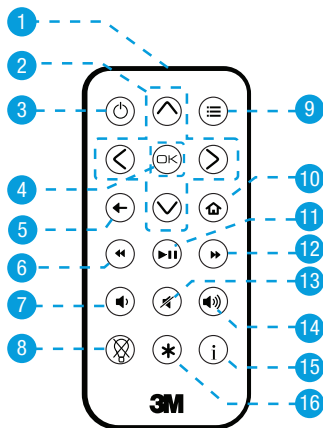
## Parts of Roku Streaming Stick



- 1 HDMI® (MHL™) Connector – Plugs into the 3M™ Streaming Projector.
- 2 Power LED – Provides power, remote communication and boot up status for the Streaming Stick™.
- 3 Reset Button – Used to reset the Streaming Stick.



## Parts of Remote Control



- 1 Infrared LED – Transmits remote control commands to projector.
- 2 Arrow Buttons – Move the selector or cursor in projector menu or the MHL enabled device's screen.
- 3 Standby – Turns the projector's lamp off or on.
- 4 OK Button – Press to select or click an item.
- 5 Back Button – Press to open previous screen on the MHL enabled device.

- 6     Rewind – Rewinds video and music during playback.
- 7     Volume Down – Decreases the audio volume.
- 8     Lamp ON/OFF – Turns off the projector lamp while keeping projector power on.
- 9     Menu Button – Press to open the projector menu.
- 10    Home Button – Press to open the Home screen on the MHL enabled device.
- 11    Fast Forward – Advances video music playback.
- 12    Play/Pause – Starts or Pauses video or music playback.
- 13    Volume Up – Increases the audio volume.
- 14    Info Button – Opens the projector information window and is the select button when the projector menu is open.
- 15    Options – View more options on the MHL-enabled device.

## Getting Started

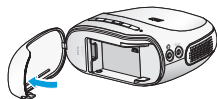
In the following section, you will install the Roku® Streaming Stick™ into the projector, charge the projector's battery, and turn on the projector.

### Roku Streaming Stick

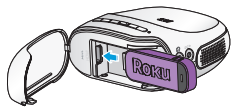
The Roku Streaming Stick comes with 3M™ Streaming Projector SPR1000 and plugs into the HDMI/MHL port on the 3M Streaming Projector.

#### Installing the Roku Streaming Stick

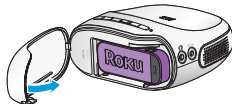
- 1 Open Cover



- 2 Insert Stick



- 3 Close Cover

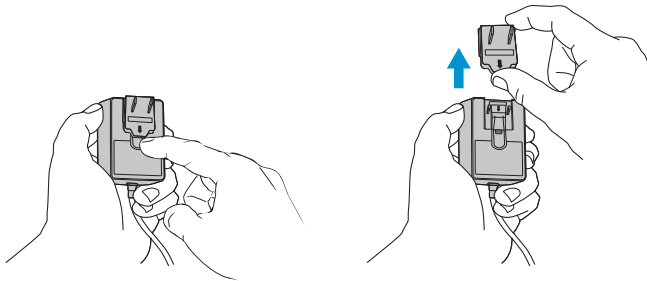


## Power Adapter

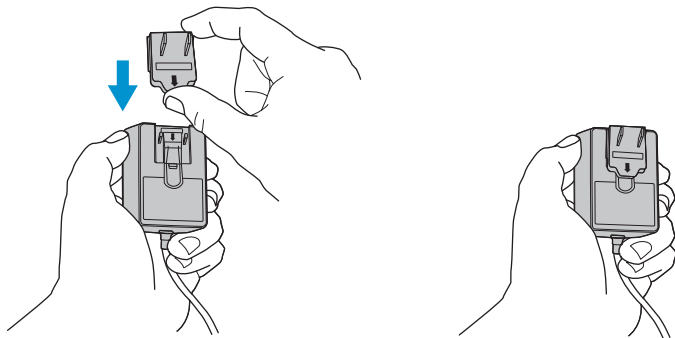
The power adapter is used to charge the battery or power the projector. There are two outlet adapters. When the power adapter is first shipped, it is fitted with a blank outlet adapter. This must be removed before installing an outlet adapter.

### Installing an Outlet Adapter

- 1 Press the "PUSH" button on the underside of the power adapter.
- 2 Remove the blank outlet adapter by sliding up.



- 3 Select the outlet adapter that will plug into your wall outlet and align to the power adapter.
- 4 Slide the outlet adapter down until it clicks into place.



## Charging the Battery

The rechargeable battery in the 3M Streaming Projector SPR1000 gives you up to two hours of battery life while in ECO lamp mode. When the battery needs to be charged, the status indicator LED starts flashing red. The battery should be fully charged before using the projector for the first time.

### Charge the battery:

- 1 Turn the projector power off.
- 2 Connect the power adapter to the projector's DC input.
- 3 Connect the other end of the power adapter to the electrical outlet.
- 4 The status indicator will change to amber while the battery is charging.
- 5 Allow three hours to fully charge the battery. When charging is complete, the status indicator will flash green.

### Battery Charging Notes:

- If the projector power is off, allow three hours for the battery to fully recharge. If the projector power is on, the battery will take longer to charge.
- The battery has a lifespan and ages every time it is fully charged and discharged. The battery will gradually lose charge capacity as it ages.

### Battery Maintenance Tips:

- Charge and discharge the battery by turning on the projector at least once a month.
- When storing the projector for more than a month, store it at 50% charge.
- The battery is at 50% charge when half of the battery icon is white.
- Do not store the projector when it is fully discharged. It will lose the ability to charge.

## Turning the Projector on and off

When you first pull the projector out of the box, you can only use the power button on the projector to turn it on. After the projector is turned on for the first time, you can turn it on or off using the power button on either the remote or projector.

MHL-enabled devices such as the Roku Streaming stick receive power from the projector. You can turn off the projector's lamp without turning off the MHL-enabled device using the remote control.

**Turning the Projector On:** Press the power button on the projector or remote control.

*Note: Some devices that receive their power from the projector might take 30 seconds or more to become ready to use.*

**Turning the Projector Off:** Press and hold the power button until the projector turns off.

**Turning the Lamp On and Off:** You can turn the projector's lamp off without turning the projector off by pressing the lamp button on the remote control. The projector lamp will turn off immediately while the cooling fans continue to run.

While the projector's lamp is off, the status indicator remains green. This tells you that the lamp is off but the projector is still on. Press Lamp On/Off button on the remote again and the lamp will turn on.

*Important Note: Even though the lamp is off, the projector continues to use a power and generate heat. The projector will turn off if it overheats or loses battery power. You can prevent the projector from turning off by keeping the air vents clear and plugging it into the power adapter.*

## Status Indicator Light

The status indicator light provides information about the projector's power, battery, and error status.

Status Indicator Light	Meaning
Solid amber	The projector is charging.
Solid green	The projector is on.
Flashing green	The projector is finished charging.
Flashing amber	The projector has overheated.
Flashing red	The battery power is low.



## Setting up the Projector

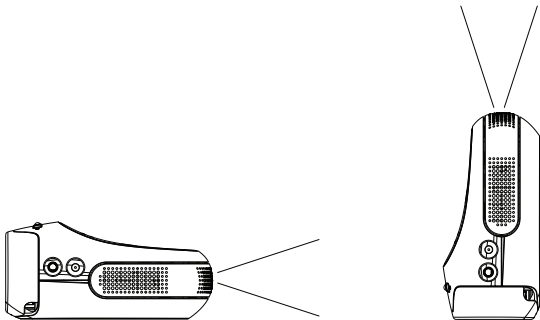
The projector is quick and easy to set up. You can project the image onto most flat surfaces. This section covers positioning the projector, focusing the image, and adjusting the brightness and contrast settings.

### Choosing a surface

The best surface for the image is a flat, white surface. In most cases, lightly textured walls do not affect the image quality. Alternatively, a color wall will change the hue of the image. You can either point the projector at a wall or projector screen or a ceiling.

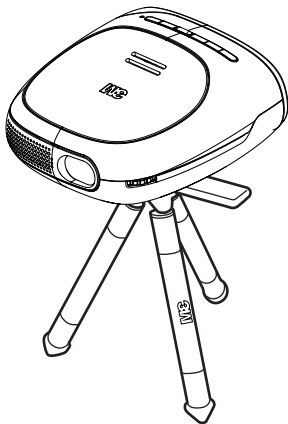
### Placing the projector

Place the projector on a stable surface. You can place the projector on its foot or on the rear cover. You can even attach the projector to a tripod.



### Attaching the Projector to Tripod (Optional Accessory)

On the bottom of the projector, you will find a tripod socket (1/4"-20) that fits most standard camera tripods, including the optional 3M tripod (78-6972-0073-7).



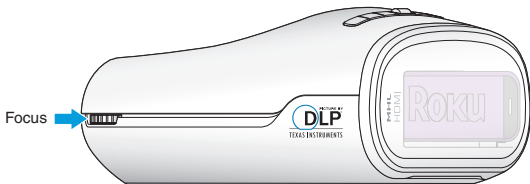
## Distance versus Image Size

The 3M Streaming Projector can project an image from 9 inches (22.1 cm) to 105 inches (265.7 cm) wide. As you increase the size of the projected image, you will need to decrease (darken) the ambient room lighting. Refer to the chart for associated dimensions.

Image Size Diagonal	Width	Height	Distance
10 in (25.4 cm)	8 3/4 in (22.1 cm)	4 7/8 in (12.4 cm)	16 5/8 in (42.2 cm)
20 in (50.8 cm)	17 3/8 in (44.3 cm)	9 3/4 in (24.9 cm)	33 1/4 in (84.3 cm)
35 in (88.9 cm)	30 1/2 in (77.5 cm)	17 1/8 in (43.6 cm)	58 1/8 in (147.6 cm)
45 in (114.3 cm)	39 1/4 in (99.6 cm)	22 in (56.0 cm)	74 3/4 in (189.7 cm)
55 in (139.7 cm)	47 in (121.8 cm)	26 in (68.4 cm)	91 1/4 in (231.9 cm)
65 in (165.1 cm)	56 5/8 in (143.9 cm)	31 7/8 in (80.9 cm)	107 7/8 in (274.1 cm)
76 in (193.0 cm)	66 1/4 in (168.3 cm)	37 1/4 in (94.6 cm)	126 1/8 in (320.4 cm)
85 in (215.9 cm)	74 1/8 in (188.2 cm)	41 5/8 in (105.8 cm)	141 1/8 in (358.4 cm)
141 1/8 in (358.4 cm)	82 7/8 in (210.4 cm)	46 1/2 in (118.2 cm)	157 3/4 in (400.6 cm)
110 in (279.4 cm)	95 7/8 in (243.6 cm)	53 7/8 in (136.9 cm)	182 5/8 in (463.8 cm)
120 in (304.8 cm)	104 5/8 in (265.7 cm)	58 3/4 in (149.3 cm)	199 1/4 in (506.0 cm)

## Adjusting the Focus

After you find a place for the projector, rotate the focus wheel to sharpen the image.



## Adjusting the Brightness and Contrast Settings

You can use the projector brightness and contrast settings to adjust the image based on the lighting conditions.

### Adjusting the Brightness

Adjust the brightness setting until details in the dark levels of the image appear. If you are unable to see the detail, try reducing the image size or the lighting in the room.

**Using the Remote:** Press the menu button at the top-right of the remote control; press the Ok button; press the right arrow to increase the brightness or the left arrow button to decrease the brightness. You can exit the menu by pressing the menu button twice.

**Using the Projector Keypad:** Press the menu button; press the Info button; press the volume down to decrease the brightness and volume up to increase the brightness. You can exit the menu by pressing the menu button twice.

### **Adjusting Contrast**

Adjust the contrast setting until details in the bright level of the image appear.

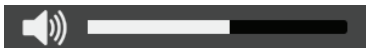
**Using the Remote:** Press the menu button at the top-right of the remote control; press the down arrow; press the Ok button; press the right arrow to increase the contrast brightness or the left arrow button to decrease the contrast. You can exit the menu by pressing the menu button twice.

**Using the Projector Keypad:** Press the menu button; press the Info button; press the volume down to decrease the brightness and volume up to increase the brightness. You can exit the menu by pressing the menu button twice.

## Volume Up/Down

The volume buttons on the projector and the remote control adjust the sound from the speakers or the audio output. Additionally, MHL enabled devices plugged into the projector can adjust the projector volume level using the device's remote.

**Display Volume Level:** Press the volume up or down button to display the volume slider.



**Increase or Decrease Volume:** Press the volume up button to increase the audio volume or press the volume down button to decrease the audio volume.

**Quickly Increase or Decrease Volume:** Press and hold the volume up button to quickly increase the audio volume or press and hold the volume down to quickly decrease or mute the audio volume.

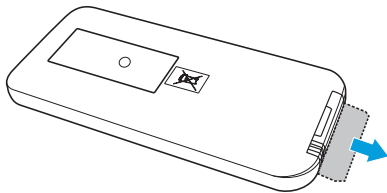
**Mute the Sound:** Press the volume up and down on the projector at the same time or press the mute button on the remote control.

## Remote Control

The 3M remote control controls the projector, the Roku Streaming Stick™, or any other MHL enabled device plugged into the projector.

## Remove Protective Film

Before you can begin using the remote control, you must remove the protective film from the battery compartment. Remove the film as shown below.



## Using the Remote

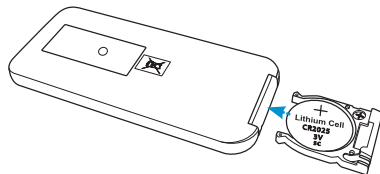
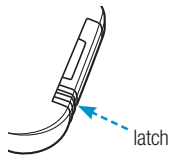
When using the remote control, point the remote control's infrared transmitter at the receiver on the projector. Sometimes you can control the projector by pointing the remote at the surface in front, beside, or above the projector. The remote control's range is up to 20 feet.

**Note:** Sunlight and some indoor lighting may reduce the range of the remote control.

## Replacing the Battery in the Remote Control

Replace the battery in the remote control with a CR2025 battery.

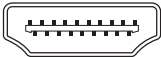
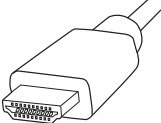


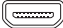



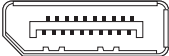

- 1 Remove the battery and battery tray by holding the latch toward the center of the tray and then pull the tray out of the remote control.
- 2 Place the new battery into the tray and orientate the battery positive side (+) as indicated on the tray.
- 3 Finally, slide the tray into the remote control.





## Connecting to other devices

The 3M Streaming Projector connects to other digital video devices such as tablets, computers, smartphones, and dvd players. Compatible device will most likely have one of the following video output connectors:

Description	Connector on Device	Cable Connector	Example Devices
HDMI®			DVD Players, BluRay DVD Players, Game Consoles, Set-Top Boxes, Computers
Mini-HDMI			Portable Digital Media Players, Computers
Micro HDMI			Tablets and Smartphones
Micro USB (MHL)			Tablets and Smartphones
Display Port®			Computers

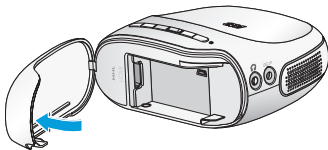
**Notes:**

- 1. Not all devices with a microUSB port are MHL enabled devices. Check the device's specification before purchasing a MHL cable.*
- 2. Some products have proprietary connectors not shown above (such as the dock connector on the Apple iPad or iPhone.) Check for digital video accessory adapters or cables from the manufacturer.*

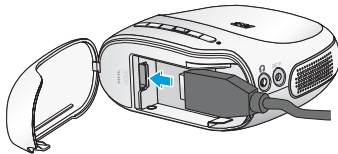
## Connecting to the Projector

The HDMI/MHL port on the projector can accept a standard HDMI connector. Once you plug the cable into the port, you can close the cover.

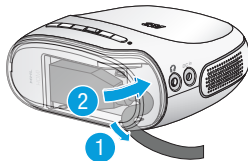
- 1 Open Cover



- 2 Plug in HDMI cable



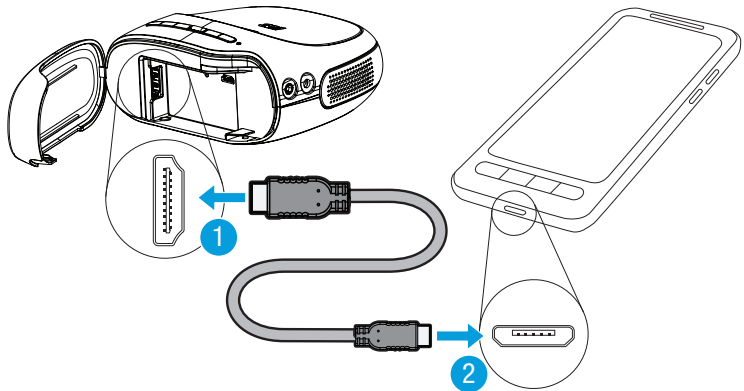
- 
- 
- 3 Route the cable (1)  
and close the cover (2)



### Connecting to a MHL Device

The 3M Streaming Projector supports MHL through the HDMI port. While playing video and audio from your MHL compatible device, the 3M Streaming Projector charges your device. Additionally, you can control your device using the projector's remote control. The standard MHL cable has a microUSB connector on one end and a HDMI connector on the other.

- 1 Connect the HDMI end of cable to the projector's HDMI/MHL input.
- 2 Connect the other end of the cable to the device's microUSB port (MHL).

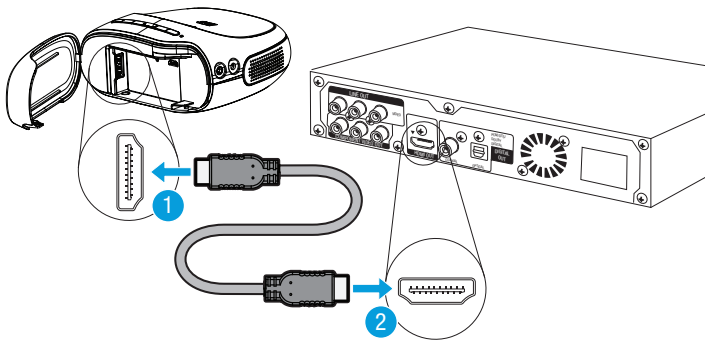
**Notes:**

- 1. MHL cable not included. This cable is also known as a "passive MHL cable".*
- 2. Please reference the device's user manual and specification for compatibility with MHL.*

## Connecting to a HDMI Video Device

The 3M Streaming Projector can playback video and audio from a device with HDMI output.

- 1 Connect one end of the HDMI cable to the projector's HDMI/MHL input.
- 2 Connect the other end of the cable to the video device's HDMI output.



### Notes:

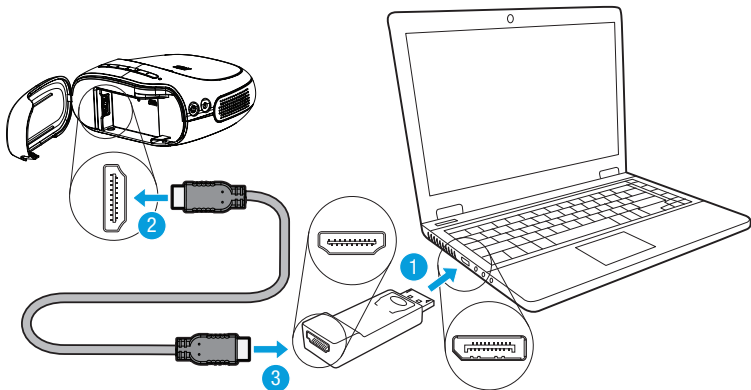
*1. HDMI cable not included.*

*2. Please reference the device's user manual and specification for compatibility with HDMI.*

## Connecting to a Display Port® Video Device

The 3M Streaming Projector can play video and audio from your Display Port compatible device. You will need a Display Port to HDMI adapter or cable.

- 1 Connect the DisplayPort to HDMI adapter to the device.
- 2 Connect one end of the HDMI cable to the projector's HDMI/MHL input.
- 3 Connect the other end of the cable to the HDMI port on the adapter.

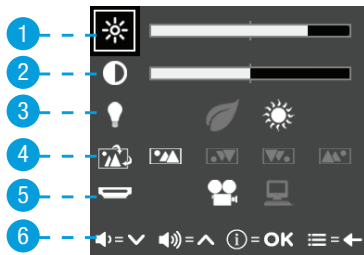


***Notes:***

- 1. The DisplayPort adapter and HDMI Cable are not included.*
- 2. Please reference the device's user manual and specification for compatibility with Display Port.*





## Menu

The projector's menu allows you to adjust the brightness, contrast, lamp power, and picture mode. The following section describes each setting and how to navigate the menu system.



Item	Menu Item	Description
1	Brightness	Adjusts the dark levels of the image.
2	Contrast	Adjusts the bright levels of the image.
3	Lamp Power	Switches between standard and eco mode. Eco mode extends the battery life by reducing the power and brightness of the lamp. 🍃 - Eco ☀️ - Normal (Default)



Item	Menu Item	Description
4	Image Orientation	Changes the image orientation  - Normal (Default)  - Upside down  - Upside down and mirrored  - Mirrored
5	Picture Mode	Changes the image based on the input type: video or computer.
6	Navigation Help	Since the buttons on the projector have multiple purposes, Navigation Help provides a key for the buttons on the projector.

## Using the menu

You can navigate the menu using the buttons on the projector or the remote control.

**Open the Projector Menu:** Press the Menu button.

**Select a Menu Item:**

- **Projector Control Panel:** Press the Volume Up and Down to move the selector.
- **Remote Control:** Press the up or down arrows.

**Adjust Menu Item:**

- **Projector Control Panel:** Press the Info button and press Volume Up and Down to adjust the setting.
- **Remote Control:** Press the OK or right arrow and then press right or left button to adjust the setting.

**Return to Menu Item Selection:** Press the Menu button or press OK on the remote control.

## On-Screen Icons

One of the following icons will appear when the projector does not detect an input, detects a MHL device but no input, or the video resolution is not supported.



- No input detected



- video resolution is not supported



- A MHL device is detected but the video signal is not detected.

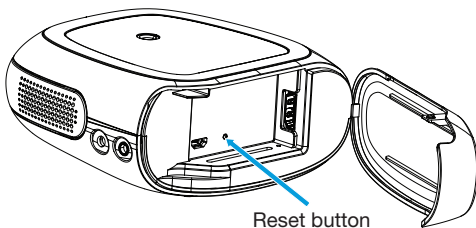
## Information Screen

Press the Info button on the remote or projector to open the information screen. The information shows you if the sound is muted or not, the lamp power level and battery power level.



## Reset Button

The reset button restarts the projector in the event the projector stops responding. Reset the projector by disconnecting the video input and power, and then press the reset button using an uncoiled paper clip. This will turn off the projector and allow you to turn the projector on again.



## Cleaning the Projector

- 1 Turn off the projector and disconnect power and other cables.
- 2 Use a soft cloth, such as the 3M™ High Performance Cleaning Cloth, to wipe off dust. If the dust is difficult to remove, dampen the cloth with clean water and then wipe the projector clean. Then use a clean cloth to dry the projector.

***Important Note: Do not use cleaning chemicals or solvents to clean the projector. Cleaning chemicals and solvents may cause the plastic parts to discolor.***

# Troubleshooting

## The Power Adapter and Charging the Battery

I do not see where to insert the outlet clip.

- There is a blank clip, which covers the power adapter contacts, when it is shipped. Remove the blank clip.

I do not see an amber light when I plug the power adapter into the projector.

- Make sure the outlet that the power adapter is plugged into is working.
- Make sure the connector from the power adapter is plugged into the "DC In" on the projector and not the headphone jack.
- If the LED indicator is flashing green then the battery is fully charged.

## Installing the Roku Streaming Stick into the Projector

The Roku Streaming Stick will not insert into the projector.

- There is a dust cap on the end of the connector. Remove it before inserting it into the projector.
- When you insert the stick, make sure the word Roku is facing out.

The cover hits the Roku Streaming Stick when I close the cover.

- The streaming stick may not be inserted properly. Try removing the stick and inserting it again.

**The cover does not close properly.**

- There is tongue on the bottom corner of the cover. Make sure the tongue inserts into the groove on the projector and the rest of the cover snaps into place.

### **Turning the Projector On or Off**

**The projector will not turn on.**

- The battery is not charged. Plug the power adapter into the projector and try again.

**The projector button panel is on but the projector is not projecting an image.**

- The video source (such as the Roku Stick) is outputting a black image. First, try removing the Roku Streaming Stick or disconnect the video cable. Do you see the 3M logo screen? If not, try turning off the projector and turning it on again. If you still do not see a 3M Logo screen while the status indicator is green, contact 3M for additional support.
- The Lamp is off. Press the Lamp ON/Off button on the remote control.

**The remote control will not turn on the projector.**

- When the projector is new and never been turned on, you must use the power button on the projector. Now you can turn on the projector by pressing the power button on the projector or the remote control.

The projector is powered on and the Roku Stick is inserted but the 3M Streaming Projector displays the No Input Detected screen.

- You should see a power light on the stick. If you do not, the stick may not be inserted properly. Try removing the stick and inserting it again.

The status indicator on the projector flashes red.

- The projector's battery needs to be charged.

I continue to see the bouncing Roku screen and that's all.

- While the Roku Streaming Stick boots up, you will see the bouncing Roku screen. Normally the Roku Streaming Stick takes about two minutes to boot up. If the screen does not change within 10 minutes, try turning off the projector and try again.

### **Setting Up the Projector**

The projector falls over when I place it on its rear cover.

- The cover may not be seated properly. There is a tongue on the bottom corner of the cover. Insert the tongue into the groove on the projector and the rest of the cover will snap into place.

The image is tinted or discolored.

- The wall or surface you're projecting onto is colored. Try projecting onto a white wall or surface.
- The lens may be dirty. Use a dry cotton swab to clean it off.

## **Focusing the Image**

The image is blurry.

- Use the focus wheel on the side of the projector (next to the lens) to sharpen the image.
- Reduce the input resolution. The native resolution of the projector is 480p. Therefore, resolutions greater than 720p may appear blurry.
- If you are closer to the projected image than the projector, you might be seeing the individual pixels that make up the image. Reduce the size of the image or move away from the image.

The image is too dim.

- Reduce the image size and/or decrease (darken) the room lighting.

The image seems bright enough but there are no details in the dark shadows.

- Open the projector menu and increase the brightness setting and then decrease the contrast slightly.

The image seems bright enough but there are no details in the highlights.

- Open the projector menu and decrease the contrast.

## **Adjusting the Volume**

There is no audio coming out of the speaker.

- Turn up the volume or turn off mute.

- Turn up the volume on the external speakers.
- There may be a moment of silence in the show you are watching.

### **Using the Remote Control**

The remote control does not work.

- Remove the plastic film that is in-between the battery and the remote control.
- Replace the battery because it may be dead. The battery size is CR 2025.
- The remote control is out of range of the projector. The remote control's range is up to 20 feet.
- Sunlight or the lighting in the room can interfere with the projector's reception of the remote control's signal.



# Product Specification

Description		Specification
Imager	Technology	TI DLP
	Size	0.3"
	Resolution	WVGA 854 x 480 Pixels
	Aspect Ratio	16:9
Projection Distance		16 5/8 in. – 199 1/4 in. (42.2 – 506 cm)
Image Size		10 in. – 120 in. Diagonal (25.4– 304.8 cm)
Throw Ratio (Diagonal: Distance)		1:1.66
Lens Offset		100%
Inputs		DC-in, HDMI (MHL)
Audio Outputs		1x2 Watt Speaker, Headphone Jack
Video Compatibility		NTSC, PAL
Video Resolutions		480p, 576p, 720p, 1080i
Dimensions		4.33 x 4.21 x 2 in. (110 x 107 x 51.6mm)
Weight		11 oz (311 g)
Tripod Socket		1/4" - 20
Operating Conditions	Temperature Range	32 – 95°F (0 – 35°C)
	Humidity Range	10 – 80% RH without condensation
	Altitude Range	Sea Level to 1,829 m (6000')

Description	Specification
Power Consumption	11.5 Watts (Standard Lamp Mode)
	7.0 Watts (Eco Lamp Mode)

## Battery Specification

Description	Specification
Type	Rechargeable Lithium-Ion Battery
Rated Capacity	7.4 V, 2600mAh

## Video and Audio Support

The following list shows the resolutions that are supported by the projector. The projector displays a WVGA (854 x 480) image. The best input resolution for the projector is 480p. Other higher resolution will be reduced to 480p resolution.

### Video Support

Description	Resolution (width x height)	Refresh Rate	Aspect Ratio
480p	640 x 480p	59.94/60 Hz	4:3
	720 x 480p	59.94/60 Hz	4:3
	720 x 480p	59.94/60 Hz	16:9
576p	720 x 576p	50 Hz	4:3

Description	Resolution (width x height)	Refresh Rate	Aspect Ratio
	720 x 576p	50 Hz	16:9
720p	1280 x 720p	59.94/60 Hz	16:9
	1280 x 720p	50 Hz	16:9
1080i	1920 x 1080i	59.94/60 Hz	16:9
	1440 x 1080i	50 Hz	16:9

## Audio Support

Audio Format: Linear PCM

Number of Channels: 2

Sampling Frequency: 32, 44.1, and 48 kHz

Number of Bits Per Sample: 16, 20 or 24 bits

## Accessory List

Call 1-866-831-1656 to order 3M accessories.



### 3M Power Adapter Kit

78-6972-0123-0

Replacement power supply and battery charger



### 3M Remote

78-6972-0124-8

Replacement Remote Control



### 3M™ Portable Screen:

78-6972-0059-6

Double the brightness of your image for a professional look. Fits up to a 26" image.



### 3M™ Tripod:

78-6972-0073-7

A snap to set up, collapse and carry. Legs extend 12".

## Limited Warranty

The 3M™ Streaming Projector (the “3M Product”) is warranted to be free from defects in material or manufacture for a period of 90 days from the date of purchase. If the product does not conform to the warranty within the warranty period, 3M’s exclusive obligation is to repair, replace or refund the purchase price of the non-conforming product. To the extent permitted by law, 3M will not be liable for indirect, incidental, special or consequential damages, irrespective of the legal theory asserted. If the product needs service, please call 1-866-631-1656. For the detailed terms and conditions of the warranty go to <http://www.3MPocketProjector.com/support>, or contact us at 1-866-631-1656 or [meetings@mmm.com](mailto:meetings@mmm.com)

# Regulatory Notices

## FCC STATEMENT - CLASS B

This equipment has been tested and found to comply with the limits for a Class B digital device, pursuant to part 15 of the FCC Rules. These limits are designed to provide reasonable protection against harmful interference in a residential installation. This equipment generates, uses and can radiate radio frequency energy and, if not installed and used in accordance with the instructions, may cause harmful interference to radio communications. However, there is no guarantee that interference will not occur in a particular installation. If this equipment does cause harmful interference to radio or television reception, which can be determined by turning the equipment off and on, the user is encouraged to try to correct the interference by one or more of the following measures:

- Reorient or relocate the receiving antenna.
- Increase the separation between the equipment and receiver.
- Connect the equipment into an outlet on a circuit different from that to which the receiver is connected.
- Consult the dealer or an experienced radio/TV technician for help.

NOTICE: This Class B digital apparatus complies with Canadian ICES-003.

**INSTRUCTIONS TO USERS:** This equipment complies with the requirements of FCC equipment provided that the following conditions are met. If the cables include a EMI ferrite core, attach the ferrite core end of the cable to the projector. Use the cables which are included with the projector or specified.

Note: Changes or modifications not expressly approved by the party responsible for compliance could void the user's authority to operate the equipment.

## CE Statement

ElectroMagnetic Compatibility Statement: Meets 2004/108/EC Directive

Low Voltage Directive: Meets 2006-95-EC Directive.

## WEEE Statement

The following information is only for EU-members States: The mark shown to the right is in compliance with Waste Electrical and Electronic Equipment Directive 2002/96/EC (WEEE). The mark indicates the requirement NOT to dispose of the equipment as unsorted municipal waste, but use the return and collection systems according to local law.



## RoHS Statement

Restriction of the Use of Certain Hazardous Substances in Electrical and Electronic Equipment (known as “RoHS”), 2011/65/EU of the European Parliament and of the Council and the Regulation 1907/2006 (known as “REACH”) relating to “Substances of Very High Concern” (“SVHC’s”), the European Union’s Directive 94/62/EC relating to packaging, the U.S. Lacey Act and other similar laws (“Substance Laws”). Product will not contain substances in excess of permitted concentration values established by Substance Laws unless the applicable specifications specifically permit that substance in a higher concentration value. Without limiting the forgoing, substances in the product will not exceed the following maximum concentration values in any homogeneous material (“Restricted Values”): (a) 0.1% (by weight) for each of lead, mercury, hexavalent chromium, polybrominated biphenyls or polybrominated diphenyl ethers; or (b) 0.01% (by weight) for cadmium.